

A360 Channel Manager

User Guide

Notice of Rights

All rights reserved. No part of this document may be reproduced or transmitted in any form or by any means—electronic, mechanical, photocopy, recording, or otherwise—without written permission of Aviom, Inc.

Trademarks

Aviom, A-Net, the A-Net icon, Pro16, Pro16e, Pro64, Virtual Data Cables, m-control, One-Touch Ambience, Dual Profile Channel, Network MixBack, and AllFrame are trademarks of Aviom, Inc. All other trademarks are the property of their respective owners.

Aviom products are protected by one or more of the following patents: 7,043,671; 7,301,966; 7,403,828; 7,523,362; 7,526,526; 7,787,580.

© 2013 Aviom, Inc. All rights reserved.



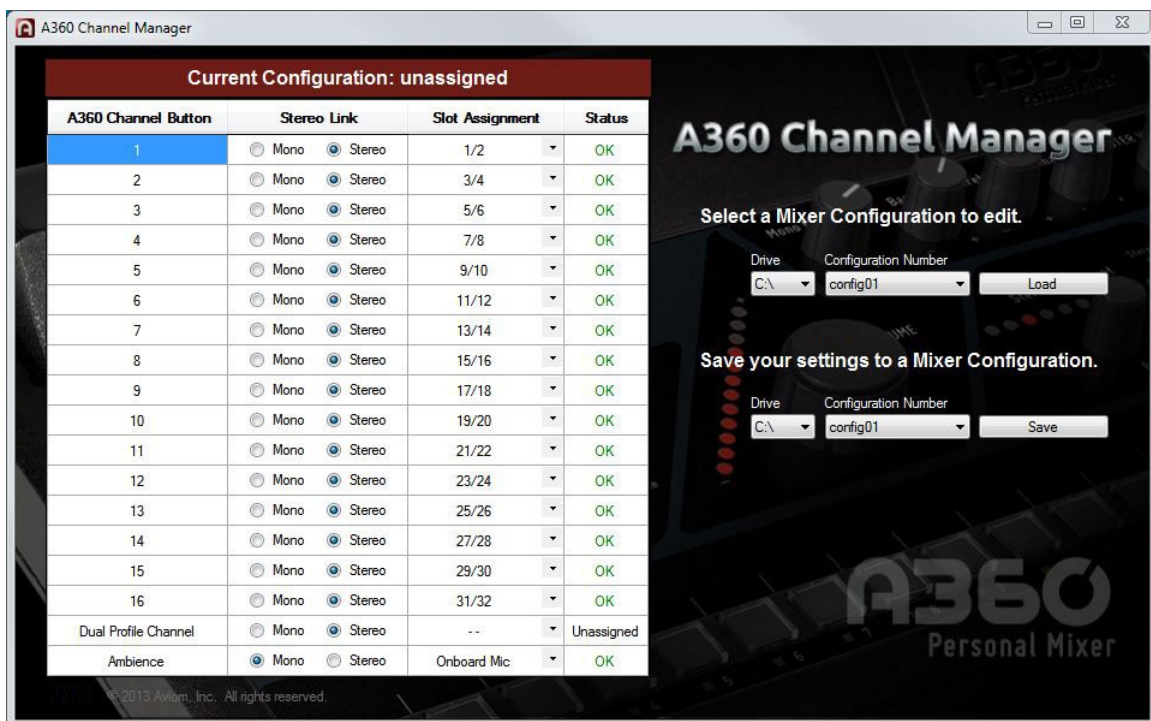
Information subject to change without notice.

Table of Contents

A360 Channel Manager	1
Feature Overview	2
Installing A360 Channel Manager	3
Computer Requirements	3
A360 Requirements	3
Start the Installation Process	4
Welcome Screens	4
Software License Agreement.	5
Install	6
Software Security	7
Finish	7
Updating or Removing the Application	8
What Gets Installed	9
Using A360 Channel Manager	10
Window Components	10
Mixer Configuration Editing Tools	11
A360 Channel Button	12
Mono/Stereo Radio Buttons	12
Network Slot Assignment	14
Mono Channels	14
Stereo Channels	15
Ambience	15
Channel Status	16
Disk-Based Functions	17
Load From Drive Drop-Down Menu	18
A360 Mixer Configuration Number to Load	18
Load Button	19
Save To Drive Drop-Down Menu	20
Storage Devices	20
A360 Mixer Configuration Number to Save	21
Save Button	22
What Gets Saved	23
Copying Mixer Configurations	25
Recalling a Mixer Configuration on the A360	25
Sample Input List	26
Index.	27
Software License Agreement.	29

A360 Channel Manager

Aviom's A360 Channel Manager™ is a PC software application designed to simplify the configuration of A360 Personal Mixers that will be used in Custom mode. A360 Channel Manager allows Pro16e™ network slots to be assigned to the mix channel buttons of the A360 as well as its Dual Profile Channel™ and One-Touch Ambience™ buttons. The resulting Mixer Configuration file can be saved to a USB memory stick for loading into the A360 Personal Mixer.



Version 2 of the A360 Channel Manager application also supports user-created mix presets saved to a USB memory device from the A360 Personal Mixer. This provides an easy way to back up mix files to a computer and transfer mix presets from one A360 to another. Twenty mix presets are saved with each mixer configuration.

Feature Overview

The A360 Channel Manager software features include:

- Simple, one-page interface
- Mono and stereo mix channel support
- Support for up to 64 input sources in the Pro16e network
- Assignable Dual Profile Channel
- Assignable One-Touch Ambience button
- 16 Mixer Configurations can be stored per USB device
- Stores 20 user-created mix presets in each configuration
- Allows easy backup of user mix presets created on the A360 Personal Mixer
- Provides an easy way to transfer mix presets from one A360 to another

Installing A360 Channel Manager

It is recommended that you quit all running Windows applications before starting the Aviom A360 Channel Manager installation process.

Check the Aviom website (www.aviom.com) for the latest information about software and firmware updates and the complete line of Aviom Pro16® and Pro64® Series products.

Computer Requirements

The minimum computer system requirements for running the Aviom A360 Channel Manager application are listed below.

Windows

- Intel® or AMD® processor — 1 gigahertz (GHz) or faster
- Intel, AMD, or 100% compatible motherboard & chipset
- Microsoft® Windows® 7 or 8
- 2 gigabyte (GB) RAM (32-bit systems) or 4 GB RAM (64-bit systems)
- 15 MB of free hard disk space for full installation
- VGA Video (1024 x 768) - 256 colors
- DirectX 9 graphics device with WDDM 1.0 or higher driver
- One available USB port for storing and loading configuration files
- Microsoft .Net Framework 4.0

If your PC does not have the .NET Framework components installed, an Internet connection may be required to download and install these Microsoft components.

The free Adobe® Reader (or equivalent) is required to open the included User Guide.

Mac OS

There is no official support for A360 Channel Manager running on Apple® Mac computers.

A360 Requirements

Firmware version 2.x or higher is required when using this version of A360 Channel Manager. Get firmware updates from the Aviom website; see the A360 Personal Mixer User Guide for information about updating the firmware in a Personal Mixer.

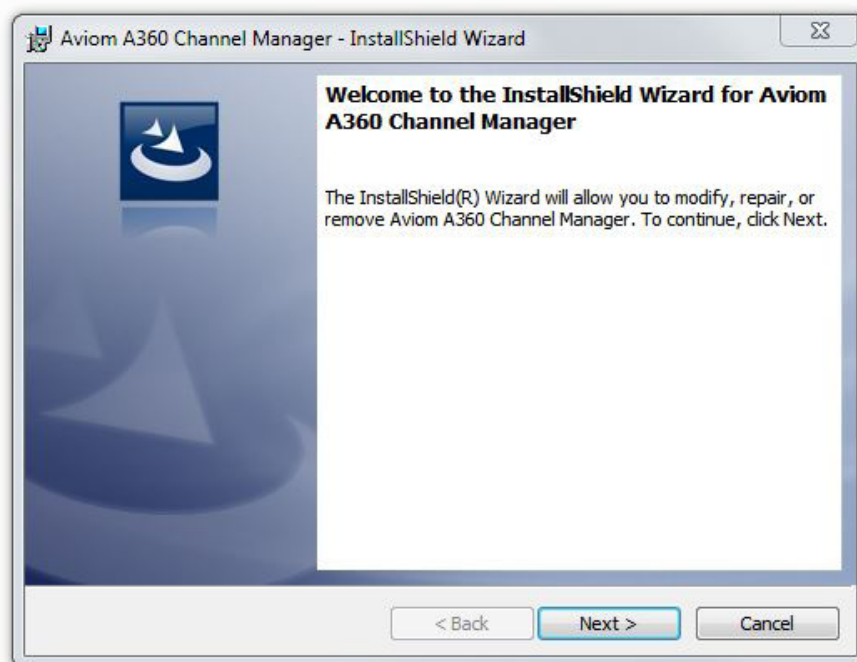
Start the Installation Process

Before installing the software, quit any running Windows applications. Locate the installer file, named "A360_Channel_Manager_Installer.exe," and double-click it to begin the installation process. If an older version of A360 Channel Manager is already installed on the computer, it will be uninstalled during the new installation process. (Any user-created files are preserved.) You can uninstall a previous version of A360 Channel Manager manually by using the tools built into the Windows OS Control Panel.

During the install, most screens give the option of navigating back to the previous step to review settings or make changes before continuing. To do this, click the **BACK** button. (To exit the installer at any time prior to finishing, click the **CANCEL** button; no software components will be installed.)

Welcome Screens

When the Welcome screens appear, click **NEXT** to continue and install A360 Channel Manager or click **CANCEL** to exit without running the installer.



Click the **Next** button to continue the installation process.

Software License Agreement

When the Software License Agreement page appears, read the agreement completely, click the **I ACCEPT THE TERMS IN THE LICENSE AGREEMENT** radio button, and then click the **NEXT** button to continue the installation.



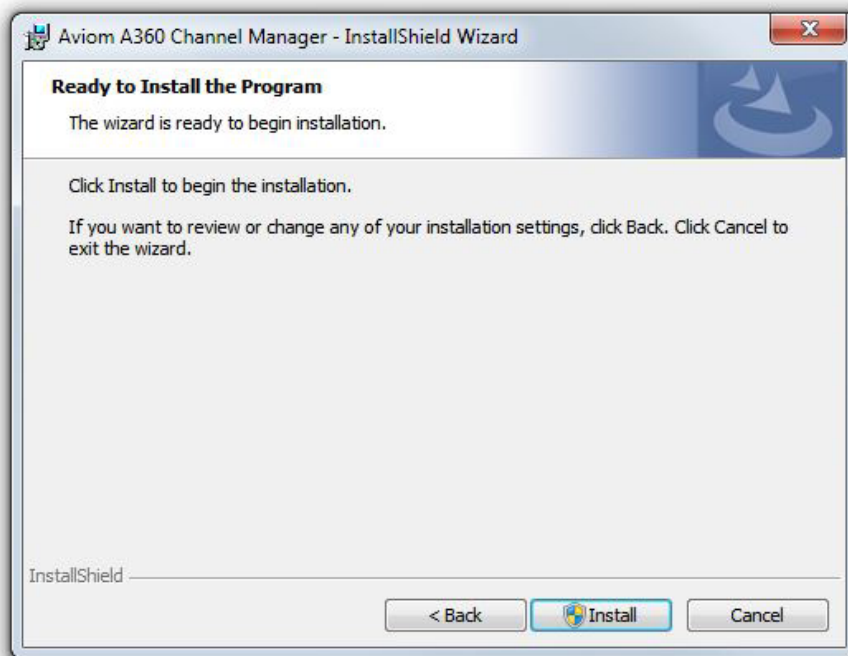
Accept the Software License Agreement to continue.

If you do not accept the software license agreement, the installer will exit without installing Aviom A360 Channel Manager.

Following the license agreement, the current ReadMe document will be displayed. Click **NEXT** to continue the installation, click **BACK** to return to the previous page of the installer, or click **CANCEL** to exit without installing the software.

Install

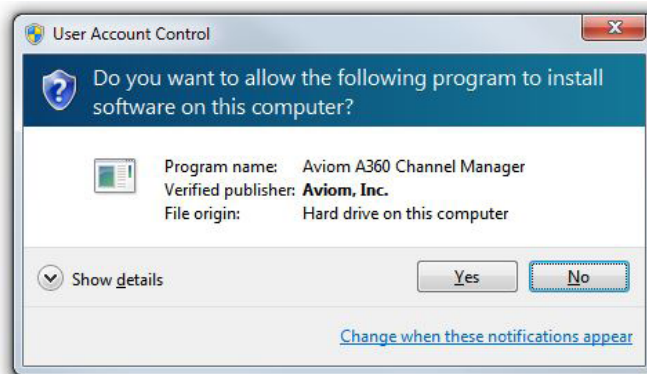
At this point, the installer has enough information to install the A360 Channel Manager application and its supporting files. On the screen that follows the ReadMe document, click the **INSTALL** button to begin the installation. Click **BACK** to return to the previous screen to review settings, or click **CANCEL** to exit the installer.



Click the Install button to start the software installation process.

Software Security

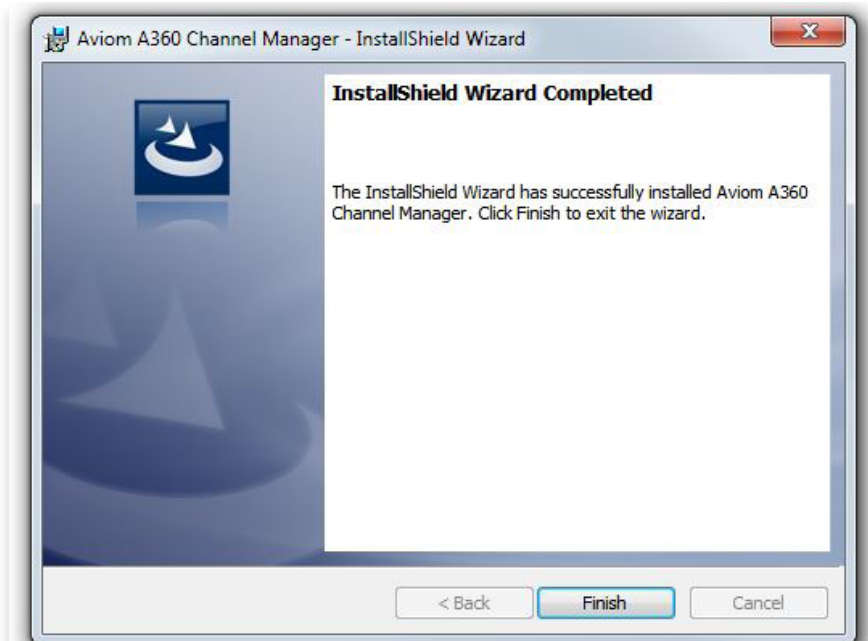
If the PC prompts that verification is required to continue the software installation process, click **Yes** to proceed or click **No** to exit without installing A360 Channel Manager.



Click Yes to continue the installation.

Finish

When the install has finished, the following screen will be displayed. Click the **Finish** button to complete the installation process.

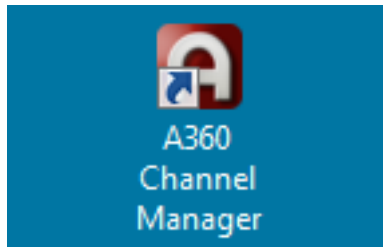


Click the **Finish** button to exit the installer.

After the installer closes, A360 Channel Manager is ready to use (assuming that all required Microsoft updates and .NET Framework components are correctly installed).

Launch A360 Channel Manager by double-clicking its icon either from the desktop or in the A360 Channel Manager application folder (C:\Program Files (x86)\Aviom\A360 Channel Manager), or by selecting **A360 CHANNEL MANAGER** from within the Aviom folder in the All Programs section of the PC Start menu.

✓ **NOTE:** The default location for the installation is
C:\Program Files (x86)\Aviom\A360 Channel Manager\A360 Channel Manager.exe

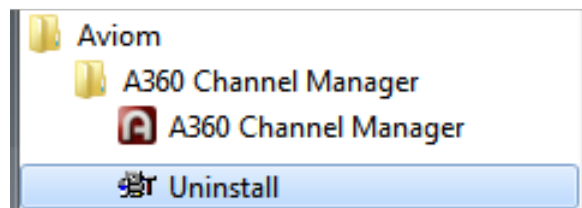


A desktop icon is installed automatically.

Updating or Removing the Application

When a new version of A360 Channel Manager is available, the old version of the application will be removed automatically in the process of installing a new version.

If you want to manually remove A360 Channel Manager, an uninstall shortcut is placed in the A360 Channel Manager folder automatically during the initial installation. The utility can be accessed directly from the Aviom\A360 Channel Manager folder created in the All Programs menu. Optionally, the application can be removed by using the standard Windows OS utilities found in the Windows OS Control Panel.



An uninstall shortcut is placed in the All Programs menu.

As a precaution, back up any files in the A360 Channel Manager folder that you wish to save before proceeding with the uninstall and update procedure. The uninstall utility removes all program files, product-specific update files, application icons, log files, registry entries, and text files associated with A360 Channel Manager. It does not delete any user-created files.

What Gets Installed

A360 Channel Manager is installed by default into the following folder:
C:\Program Files (x86)\Aviom\A360 Channel Manager

Within the A360 Channel Manager folder, which contains the application's resources, the **DOCUMENTS** folder containing user documentation, the software license, and ReadMe files will also be created. (The free Adobe Reader, or equivalent, is required to open the included User Guide.)

✓ **NOTE:** Do not rearrange or move any of the files or folders created during the installation.

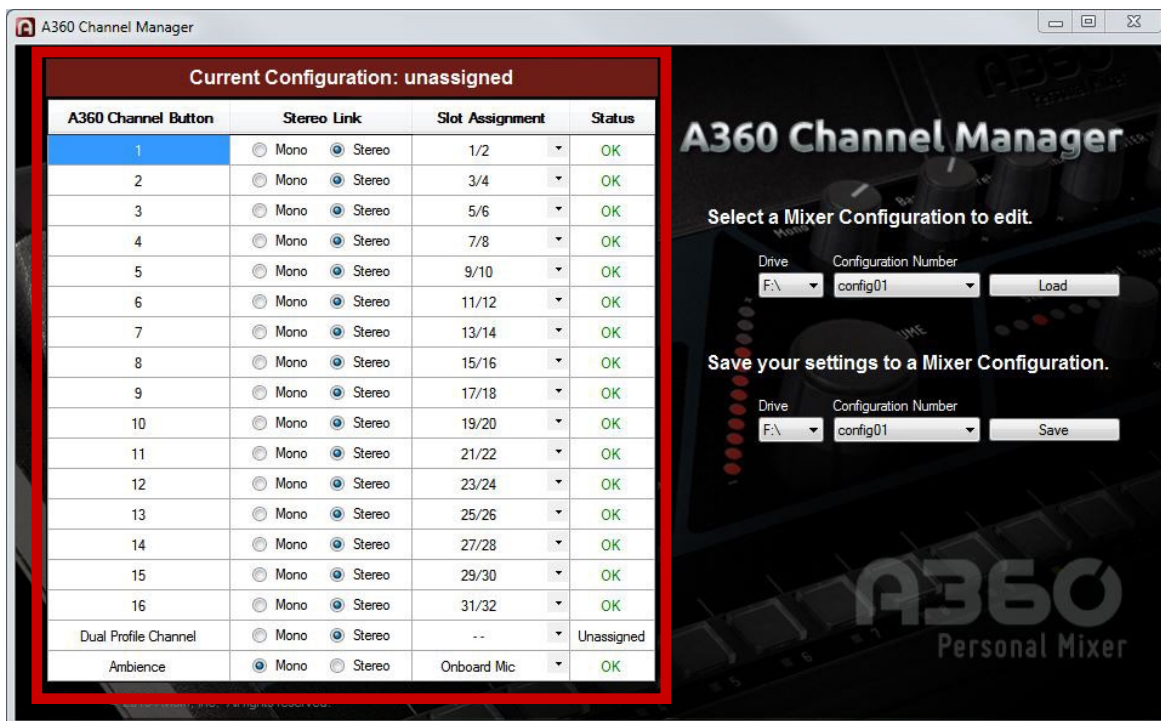
Using A360 Channel Manager

A360 Channel Manager makes it easy to create, save, and edit custom channel configurations for the A360 Personal Mixer. Each performer's Personal Mixer can load a unique channel map that assigns network slots to the mixer's channel buttons. The software can edit and save up to sixteen unique Mixer Configuration files to a disk.

In addition, A360 Channel Manager offers an easy way to back up user-created Mix Preset files that have been saved to a USB memory device from an A360 Personal Mixer as part of a configuration file.

Window Components

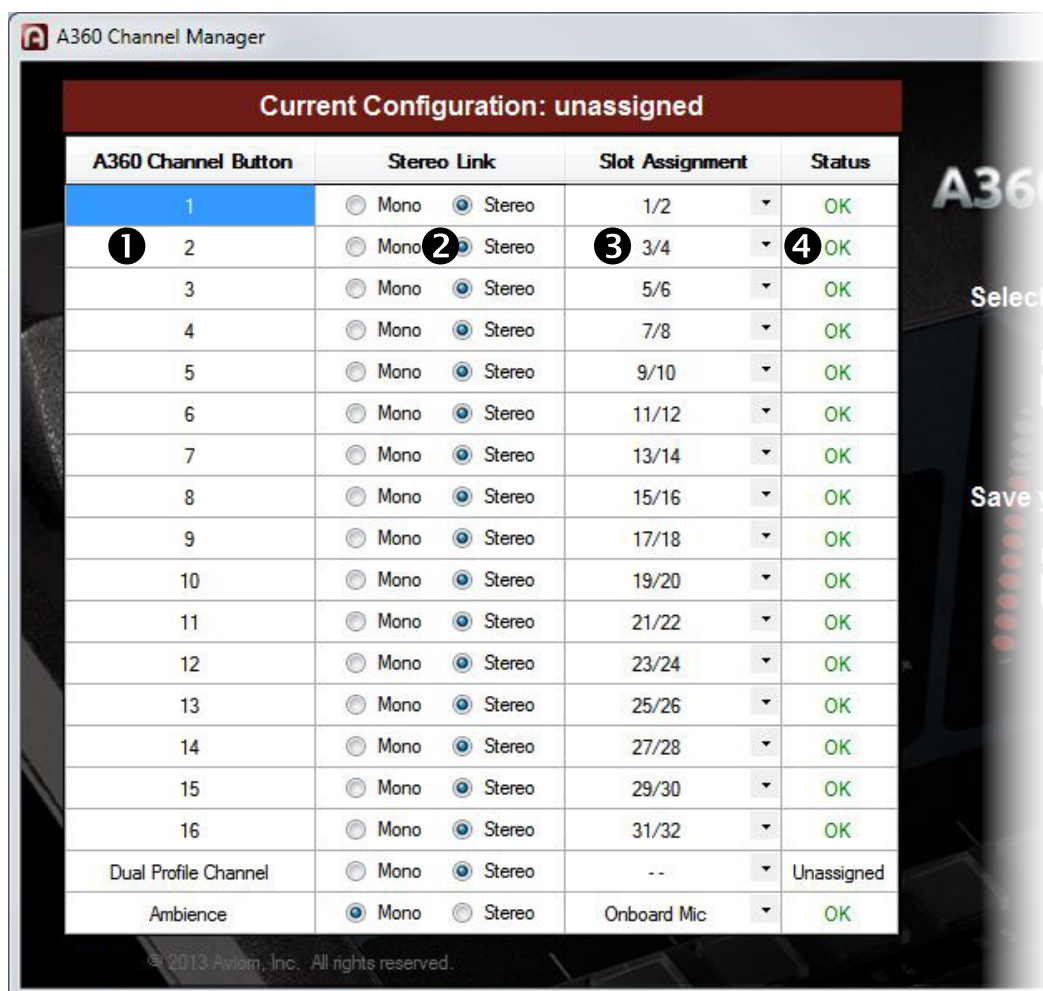
The A360 Channel Manager interface consists of a single window with two main sections that include the Mixer Configuration editing tools and the disk-based save and load functions.



Channel-based controls are on the left; disk-based controls are on the right.

Mixer Configuration Editing Tools

Information about the current Mixer Configuration being edited is shown in four columns.



Function	
1	A360 Channel Button
2	Stereo Link Mono/Stereo setting
3	Network Slot Assignment
4	Channel Status

A360 Channel Button

The A360 Channel Button column has read-only entries that correspond to the A360 Personal Mixer's sixteen mix channels, plus the Dual Profile Channel and Ambience buttons.

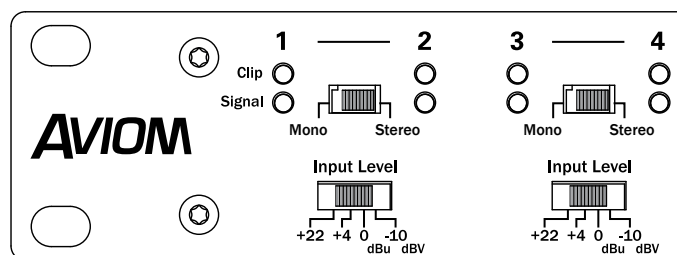
Current Configuration: unassigned			
A360 Channel Button	Stereo Link	Slot Assignment	Status
1	<input type="radio"/> Mono <input checked="" type="radio"/> Stereo	1/2	OK
2	<input type="radio"/> Mono <input checked="" type="radio"/> Stereo	3/4	OK
3	<input type="radio"/> Mono <input checked="" type="radio"/> Stereo	5/6	OK
4	<input checked="" type="radio"/> Mono <input type="radio"/> Stereo	--	Unassigned
5	<input checked="" type="radio"/> Mono <input type="radio"/> Stereo	--	Unassigned
6	<input checked="" type="radio"/> Mono <input type="radio"/> Stereo	--	Unassigned
7	<input checked="" type="radio"/> Mono <input type="radio"/> Stereo	--	Unassigned
8	<input checked="" type="radio"/> Mono <input type="radio"/> Stereo	--	Unassigned
9	<input checked="" type="radio"/> Mono <input type="radio"/> Stereo	--	Unassigned
10	<input type="radio"/> Mono <input checked="" type="radio"/> Stereo	10/20	OK

Each row shows a complete record for one button.

Mono/Stereo Radio Buttons

Each mix channel button on an A360 Personal Mixer (as well as the Dual Profile Channel and Ambience buttons) can be assigned either a mono or stereo source from the Pro16e network. The Stereo Link status for each mix channel button on the A360 can be independently set to either **MONO** or **STEREO** using the radio buttons.

✓ **NOTE:** The Stereo Link switches on network's analog or digital input devices must be set correctly to make configurations created with A360 Channel Manager work predictably. Make sure that the settings coincide between the input device(s) and the configurations made for all A360 Personal Mixers in the system to avoid unpredictable results.



Channels 1-2 and 3-4 are set as stereo pairs.

When editing a configuration, changing a stereo channel to mono (or vice-versa) will automatically clear the Slot Assignment for the channel button being edited. Its Status column will be set to **UNASSIGNED**. See page 16.

A360 Channel Manager

Current Configuration: unassigned

A360 Channel Button	Stereo Link	Slot Assignment	Status
1	<input type="radio"/> Mono <input checked="" type="radio"/> Stereo	1/2	OK
2	<input type="radio"/> Mono <input checked="" type="radio"/> Stereo	3/4	OK
3	<input type="radio"/> Mono <input checked="" type="radio"/> Stereo	5/6	OK
4	<input checked="" type="radio"/> Mono <input type="radio"/> Stereo	--	Unassigned
5	<input type="radio"/> Mono <input checked="" type="radio"/> Stereo	9/10	OK
6	<input type="radio"/> Mono <input checked="" type="radio"/> Stereo	11/12	OK
7	<input type="radio"/> Mono <input checked="" type="radio"/> Stereo	13/14	OK
8	<input type="radio"/> Mono <input checked="" type="radio"/> Stereo	15/16	OK
9	<input type="radio"/> Mono <input checked="" type="radio"/> Stereo	17/18	OK
10	<input type="radio"/> Mono <input checked="" type="radio"/> Stereo	19/20	OK
11	<input type="radio"/> Mono <input checked="" type="radio"/> Stereo	21/22	OK
12	<input type="radio"/> Mono <input checked="" type="radio"/> Stereo	23/24	OK
13	<input type="radio"/> Mono <input checked="" type="radio"/> Stereo	25/26	OK
14	<input type="radio"/> Mono <input checked="" type="radio"/> Stereo	27/28	OK
15	<input type="radio"/> Mono <input checked="" type="radio"/> Stereo	29/30	OK
16	<input type="radio"/> Mono <input checked="" type="radio"/> Stereo	31/32	OK
Dual Profile Channel	<input type="radio"/> Mono <input checked="" type="radio"/> Stereo	--	Unassigned
Ambience	<input checked="" type="radio"/> Mono <input type="radio"/> Stereo	Onboard Mic	OK

© 2013 Aviom, Inc. All rights reserved.

The Slot Assignment is automatically cleared when a channel's Stereo/Mono setting button is changed.

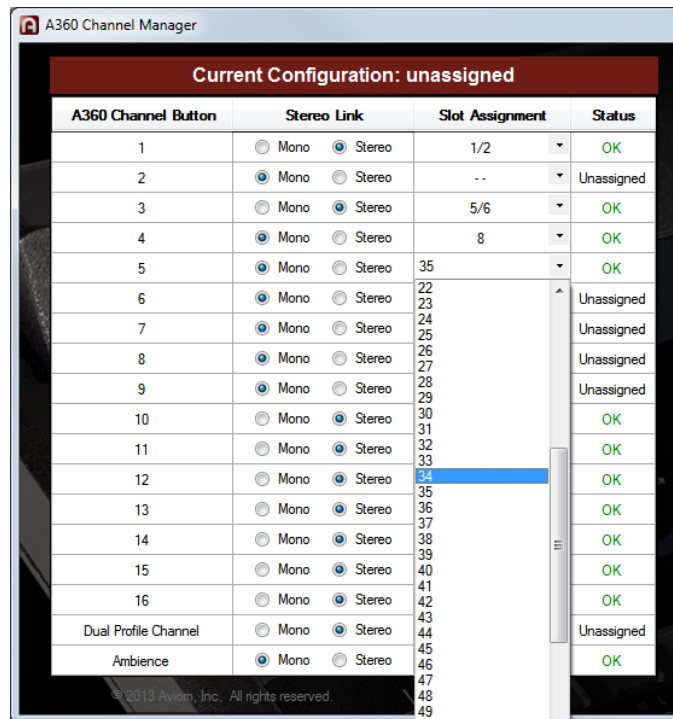
Network Slot Assignment

The Slot Assignment column consists of two drop-down menus: one is displayed when channel buttons are set to Mono and the other when they are set to Stereo. The drop-down menu will automatically update to display a mono or stereo Slot Assignment list as the Mono and Stereo radio buttons are changed for each channel.

Only network slot numbers are displayed; the use of a text-based input list is suggested to keep track of the audio sources connected each device's inputs. A sample input list appears as a reference at the end of this document.

Mono Channels

The mono drop-down contains 65 entries—network slots 1 through 64, plus the double dash “- -” character used to indicate that no network slot is currently assigned to the channel button.



Selecting a mono network slot

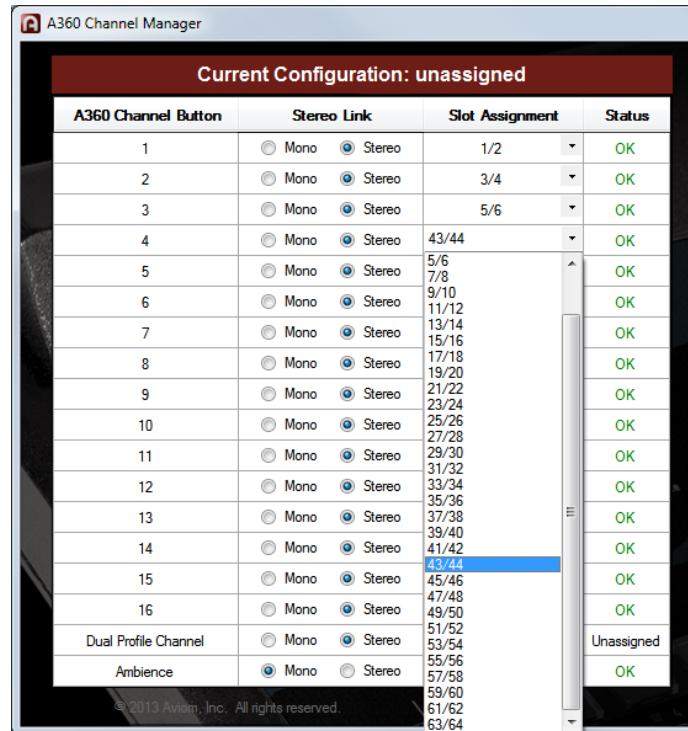
To change a mono mix channel button's assignment, click to open the drop-down menu associated with the channel and then choose the desired network slot from the list. (Choose “- -” to have no slot assignment for the channel.) If any conflicts occur, indicated by an **Error** in the Status column, they will need to be resolved prior to saving the Mixer Configuration to disk. The most common error is caused when two channels are assigned to use the same network slot.

Remember that the stereo/mono settings between the mixer configurations and the hardware input modules must match. See page 12.

Stereo Channels

The drop-down menu for stereo channels contains 33 entries shown as pairs of odd-even network slots 1/2 through 63/64, plus the double dash "--" character used to indicate that a channel button is unassigned.

To change an assignment for a stereo mix channel button, click to open the drop-down menu associated with the channel and then choose the desired pair of network slots from the list. (Choose "--" to have no slot assignment for the channel.)

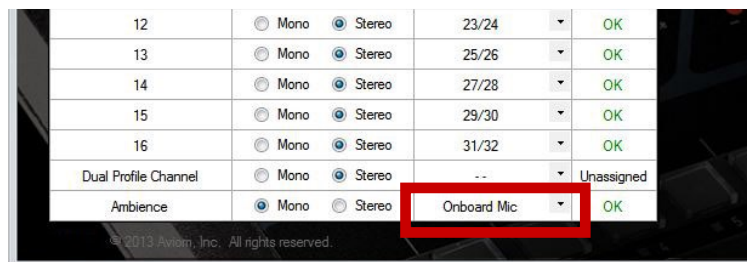


Selecting a stereo network slot from the drop-down menu

If any conflicts occur, indicated by an **Error** in the Status column, they will need to be resolved prior to saving the Mixer Configuration to disk.

Ambience

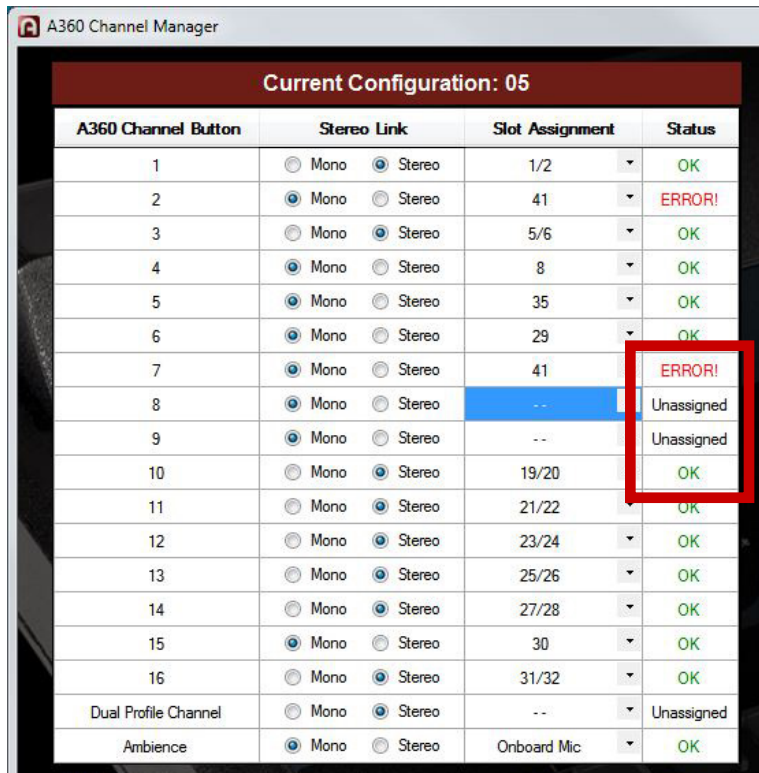
The Ambience button's drop-down menus for mono or stereo slot selection are unique—each includes an entry for **ONBOARD MIC** instead of the double-dash (unassigned) character. The Onboard Mic is always mono.



The Ambience button includes a selection for the Onboard Mic.

Channel Status

The Channel Status column has three states: **OK**, **Unassigned**, and **Error**. The Status will update as changes are made to the Stereo Link and Slot Assignment columns for each channel, and as Mixer Configurations are loaded from disk for editing.



Current Configuration: 05			
A360 Channel Button	Stereo Link	Slot Assignment	Status
1	<input type="radio"/> Mono <input checked="" type="radio"/> Stereo	1/2	OK
2	<input checked="" type="radio"/> Mono <input type="radio"/> Stereo	41	ERROR!
3	<input type="radio"/> Mono <input checked="" type="radio"/> Stereo	5/6	OK
4	<input checked="" type="radio"/> Mono <input type="radio"/> Stereo	8	OK
5	<input checked="" type="radio"/> Mono <input type="radio"/> Stereo	35	OK
6	<input checked="" type="radio"/> Mono <input type="radio"/> Stereo	29	OK
7	<input checked="" type="radio"/> Mono <input type="radio"/> Stereo	41	ERROR!
8	<input checked="" type="radio"/> Mono <input type="radio"/> Stereo	--	Unassigned
9	<input checked="" type="radio"/> Mono <input type="radio"/> Stereo	--	Unassigned
10	<input type="radio"/> Mono <input checked="" type="radio"/> Stereo	19/20	OK
11	<input type="radio"/> Mono <input checked="" type="radio"/> Stereo	21/22	OK
12	<input type="radio"/> Mono <input checked="" type="radio"/> Stereo	23/24	OK
13	<input type="radio"/> Mono <input checked="" type="radio"/> Stereo	25/26	OK
14	<input type="radio"/> Mono <input checked="" type="radio"/> Stereo	27/28	OK
15	<input checked="" type="radio"/> Mono <input type="radio"/> Stereo	30	OK
16	<input type="radio"/> Mono <input checked="" type="radio"/> Stereo	31/32	OK
Dual Profile Channel	<input type="radio"/> Mono <input checked="" type="radio"/> Stereo	--	Unassigned
Ambience	<input checked="" type="radio"/> Mono <input type="radio"/> Stereo	Onboard Mic	OK

A configuration being edited with the three channel Status states is shown.

The **OK** Status indicates that a mix channel's network slot assignment has no conflicts with the other mix channel button assignments in the current Mixer Configuration.

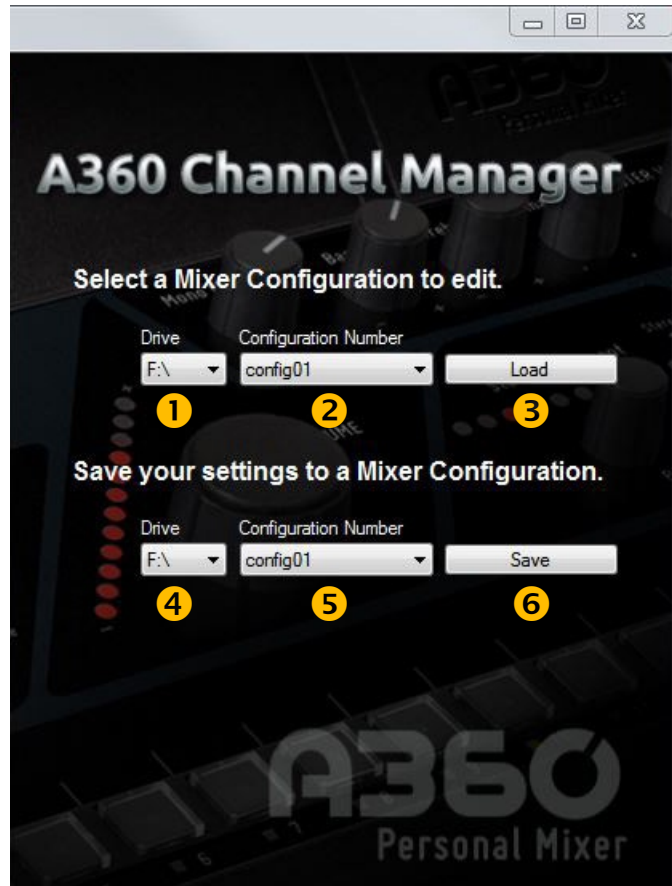
When the channel's Status reads **Unassigned**, this indicates that no network slot is currently assigned to the channel button. Mixer Configurations may be saved with some channels set to **Unassigned**, but note that at least one of the mix channel buttons (or the Dual Profile Channel) must be assigned to use a network slot before a Mixer Configuration can be saved. The Save button will be grayed out until all channel conflicts are resolved and at least one mix channel button is assigned to a network slot.

✓ **NOTE:** Any Channel Buttons that are Unassigned will not be able to be selected when the A360 Personal Mixer is in Custom mode.

The red **Error** status indicates that a channel has a conflict—this is usually caused during editing by assigning the same network slot (or pair, if stereo) to more than one channel button. A Mixer Configuration cannot be saved until all conflicts are resolved.

Disk-Based Functions

A360 Channel Manager can save up to sixteen Mixer Configurations to a disk. Drop-down menus are used for Drive and Mixer Configuration selection.



Function	
1	Load From Drive Drop-Down Menu
2	A360 Mixer Configuration Number to Load Drop-Down Menu
3	Load Button
4	Save To Drive Drop-Down Menu
5	A360 Mixer Configuration Number to Save Drop-Down Menu
6	Save Button

Load From Drive Drop-Down Menu

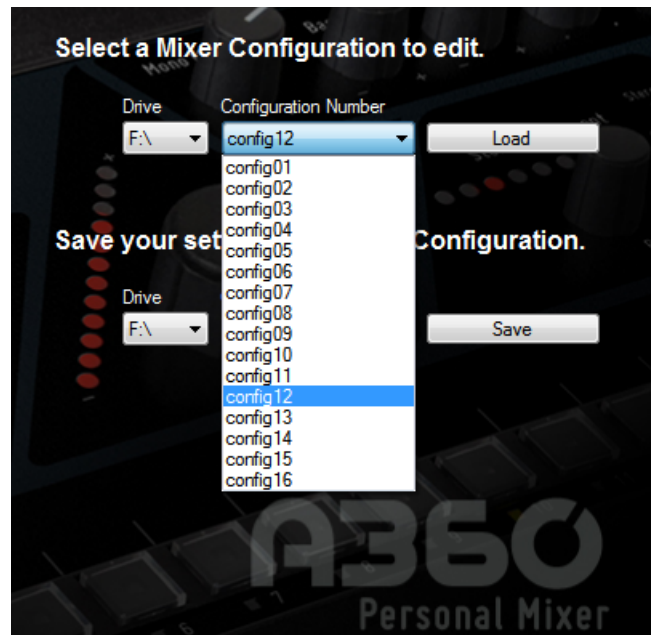
The drop-down **DRIVE** menu under the heading **Select a Mixer Configuration to edit** is used to choose a storage device connected to the PC from which Mixer Configurations and their associated Mix Presets will be loaded for editing in A360 Channel Manager. If no external device is connected, the default boot drive is automatically selected (typically this is C:\).

Mixer Configurations and Mix Presets are saved to a specific file and folder structure at the root of the storage device.

✓ **NOTE:** Do not move or rename the Mixer Configuration or Mix Preset files.

A360 Mixer Configuration Number to Load

The **CONFIGURATION NUMBER** drop-down menu in the **Select a Mixer Configuration to edit** section of the window is used to select one of the 16 Mixer Configurations to be loaded. The Mixer Configurations are named as "config01" through "config16."



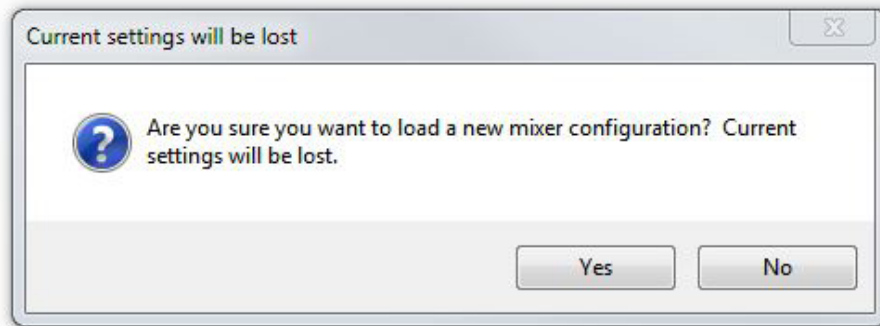
Choose a Mixer Configuration to be loaded.

✓ **NOTE:** Loading a Mixer Configuration also loads any Mix Presets associated with the configuration. Although the Mix Presets cannot be edited, they *will* be saved when the Mixer Configuration is saved to disk and will be loaded into the A360 when the Mixer Configuration is recalled from a USB memory device.

Load Button

Click the **LOAD** button after choosing a Mixer Configuration from the Configuration Number drop-down menu. Its settings will be loaded into the application for editing, after which it can be saved to any one of the 16 Mixer Configuration locations on a connected storage device. Twenty Mix Presets are also associated with each configuration; these are loaded along with the configuration, but cannot be edited.

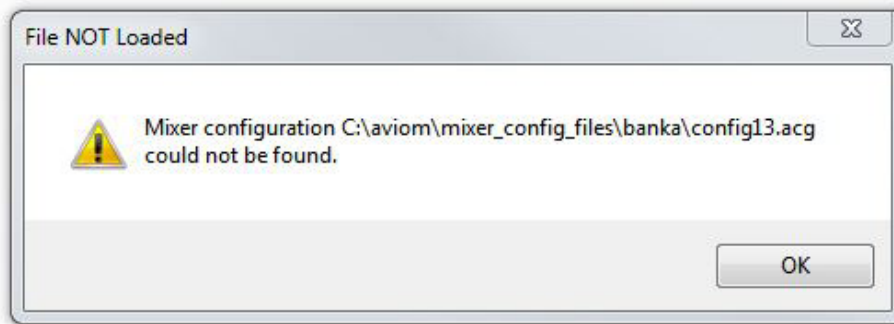
If you have unsaved changes in the editor and attempt to load a new Mixer Configuration from disk, a warning message will be displayed.



Attempting to load a Mixer Configuration from disk with unsaved edits will cause a warning message to be displayed.

Click **Yes** to load the Mixer Configuration from disk; unsaved changes in the current Mixer Configuration will be lost. Or click **No** to cancel; the Mixer Configuration is not loaded. Save the edits and try again.

If you select a Mixer Configuration to load that does not exist on the current storage device, a warning dialog will appear. Click the **OK** button to close the dialog box; choose a different Mixer Configuration or storage device and try again.

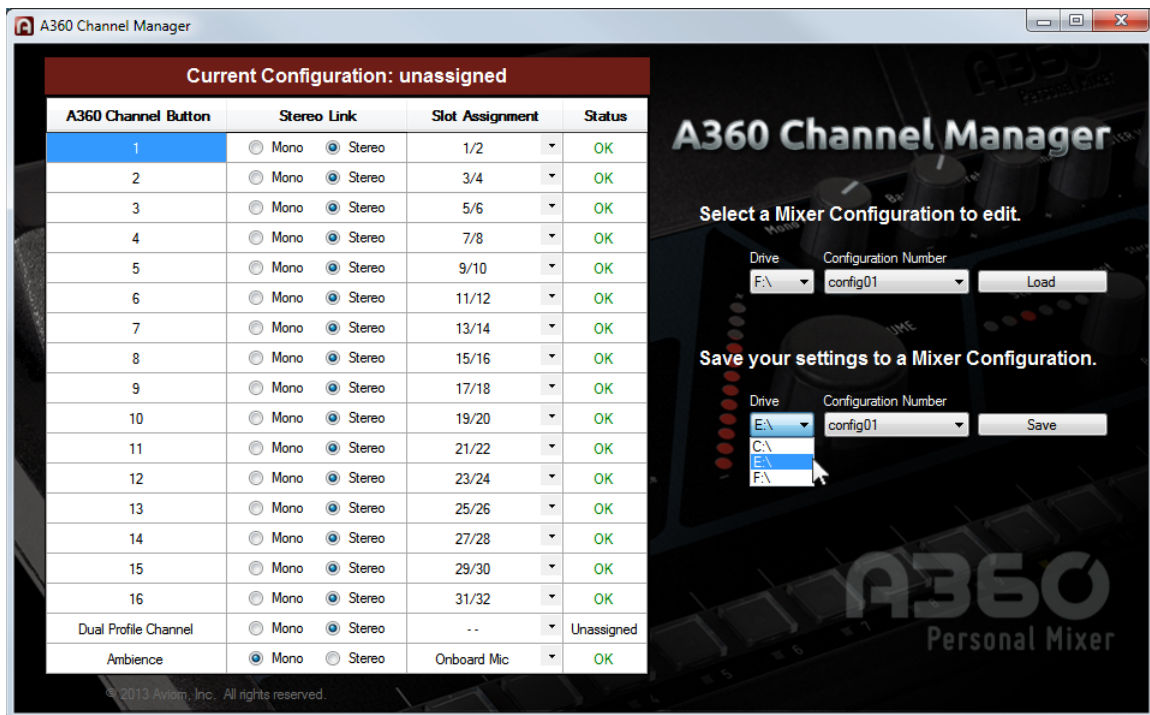


The selected Mixer Configuration was not found.

Save To Drive Drop-Down Menu

The drop-down **DRIVE** menu under the heading **Save your settings to a Mixer Configuration** selects the PC-formatted storage device connected to the PC where Mixer Configurations will be saved after they have been edited with A360 Channel Manager.

If no external device is connected, the default boot drive is automatically selected (typically this is C:\). Mixer Configurations and their associated 20 Mix Presets are saved to the root of the storage device within the Aviom folder. (The Aviom folder and its underlying folder structure will be automatically created the first time a Mixer Configuration is saved if they do not already exist.)



Choose a location where the files will be saved.

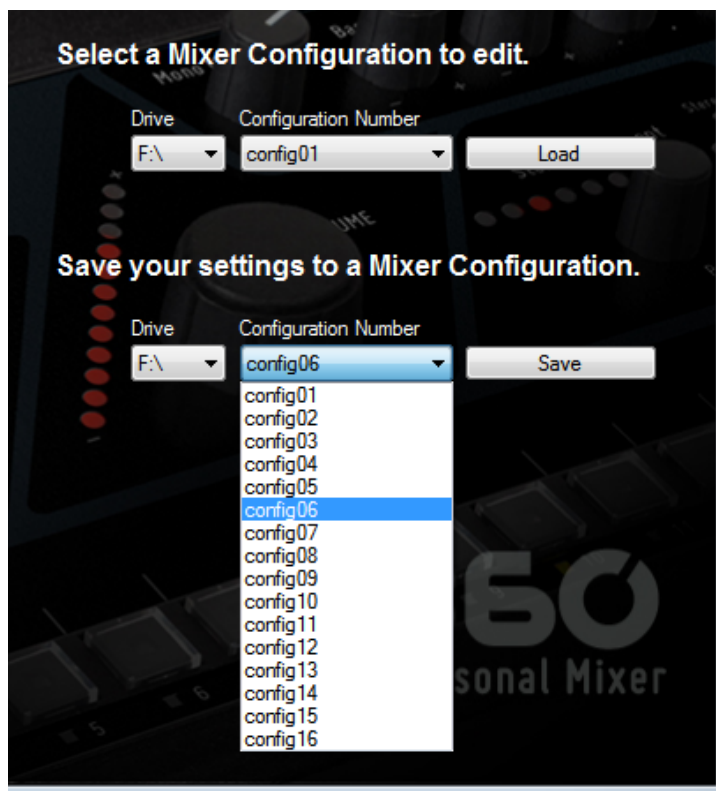
Storage Devices

The Mixer Configuration and Mix Preset files created with A360 Channel Manager are saved to the root directory of the selected storage device. The folder path used for file storage is C:\Aviom\mixer_config_files\banka. Do not change the folder locations or file names. Storage devices must be PC formatted. Devices may be partitioned, but non-PC partitions will be ignored.

-
- ✓ **NOTE:** A PC-formatted USB memory stick is required to load Mixer Configurations and Mix Presets into an A360 Personal Mixer. Recalling a configuration from a USB device will replace any previously loaded configuration plus all Mix Presets in the A360.
-

A360 Mixer Configuration Number to Save

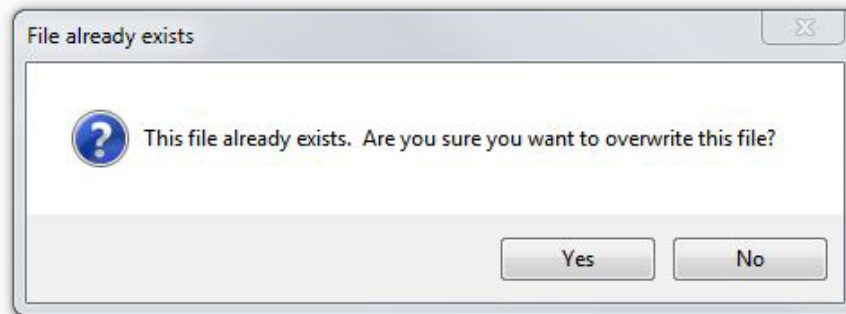
The **CONFIGURATION NUMBER** drop-down menu is used to select one of the sixteen Mixer Configuration locations on the disk; the current settings for the Mixer Configuration being edited as well as its associated 20 Mix Presets will be stored here.



Select a location where a Mixer Configuration will be saved.

Save Button

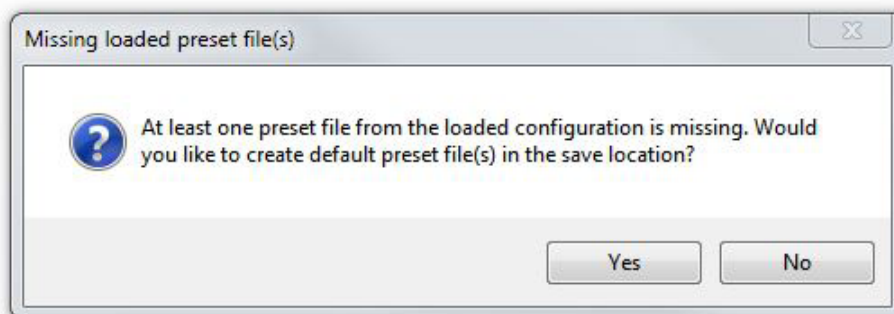
After choosing a Mixer Configuration location with the **CONFIGURATION NUMBER** drop-down menu, click **SAVE** to store the Mixer Configuration to disk. If the Mixer Configuration already exists on disk, a warning dialog will appear. Click **Yes** to overwrite the file or click **No** to cancel. To save to an alternate location, choose a different Mixer Configuration from the drop-down menu and try again.



Click Yes to replace the current file; click No to cancel.

✓ **NOTE:** Mixer Configurations are saved to a specific file and folder structure at the root of the storage device. Do not move or rename the Mixer Configuration or Mix Preset files or they will not be recognized. See page 20.

When saving a Mixer Configuration created on the PC to disk for the first time, a warning dialog box will appear if no Mix Preset files are associated with the newly created Mixer Configuration. Click **Yes** to create a default set of Mix Presets; the Mixer Configuration is saved to disk and a folder of 20 Mix Presets associated with that Mixer Configuration is also created.

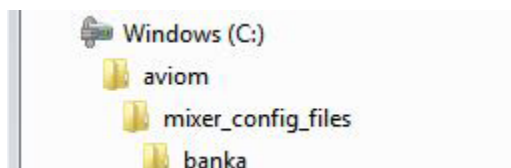


Click Yes to save the configuration and create a set of default Mix Presets.

Click **No** in the dialog box to proceed without creating any Mix Presets. You may want to do this, for example, if a configuration was loaded into an A360 and the user has started creating and saving Mix Presets in the A360, and you now want to change the assignment of the Ambience button to network audio instead of the built-in mic.

What Gets Saved

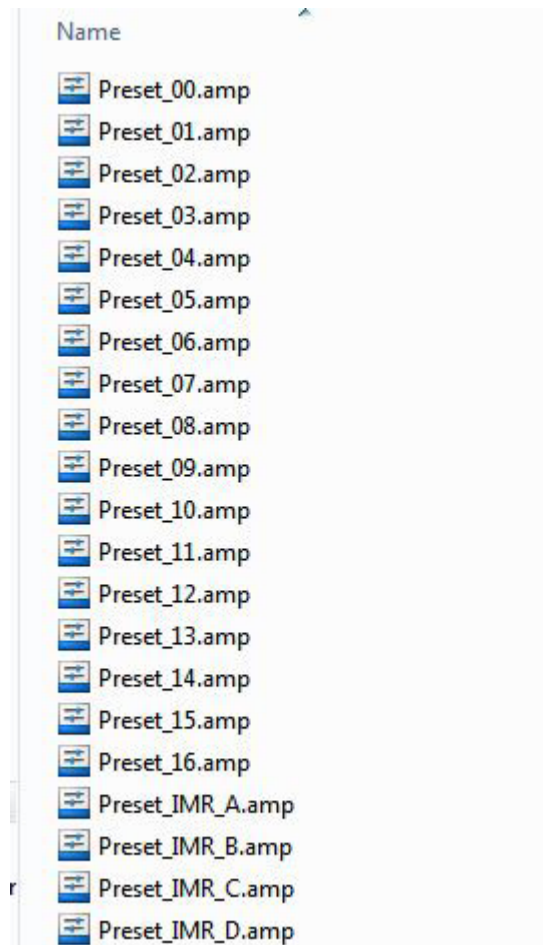
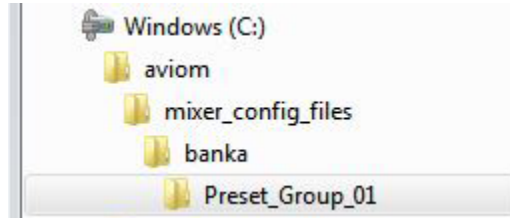
When a Mixer Configuration is saved to disk with Mix Presets, the files written to disk look like the example seen below. Each saved Mixer Configuration is saved with a number and the “.acg” extension; the Mix Presets associated with that Mixer Configuration are in a folder named “Preset_Group_nn” where “nn” is the same number as the Mixer Configuration.



Name	Type	Size
config01.acg	ACG File	1 KB
config02.acg	ACG File	1 KB
config03.acg	ACG File	1 KB
config04.acg	ACG File	1 KB
config05.acg	ACG File	1 KB
config06.acg	ACG File	1 KB
config07.acg	ACG File	1 KB
config08.acg	ACG File	1 KB
Preset_Group_01	File folder	
Preset_Group_02	File folder	
Preset_Group_03	File folder	
Preset_Group_04	File folder	
Preset_Group_05	File folder	
Preset_Group_06	File folder	
Preset_Group_07	File folder	
Preset_Group_08	File folder	

This graphic shows the disk-based file structure for eight Mixer Configurations and their Mix Presets.

Within a Preset_Group_nn folder are the 16 Mix Presets that are associated with the 16 mix channel buttons on the A360 along with the four Mix Presets that are associated with the four Instant Mix Recall buttons. The 16 mixes associated with the mix channels on the A360 are saved with the name “Preset_nn (1-16)” and the “.amp” extension; the four mixes associated with the Instant Mix Recall buttons are saved with the name “Preset_IMR_nn (A-D)” and the “.amp” extension.



Each Preset_Group folder contains 20 Mix Preset files.

✓ **NOTE:** Do not move or rename the Mixer Configuration or Mix Preset files; they will not be recognized by the A360 if changes are made to the file structure. See page 20.

Copying Mixer Configurations

If Mixer Configurations (and their associated Mix Presets) are created on an internal storage device on a PC, they can easily be copied to a removable USB storage device for loading into an A360 Personal Mixer.

To copy all 16 Mixer Configurations and their Mix Presets to a removable device:

1. Connect a PC-formatted memory stick or other removable USB storage device to the computer.
2. Locate the **Aviom** folder at the root of the current disk that was used for Mixer Configuration storage.
3. Click to highlight and select the Aviom folder.
4. Right-click and choose **COPY** from the contextual menu (or use the shortcut Control-C).
5. Navigate to the root of the external storage device.
6. Right-click and choose **PASTE** from the contextual menu (or use the shortcut Control-V).
7. The Aviom folder and its folder structure along with the sixteen Mixer Configurations and their Mix Presets are written to the external device.
8. Eject the external storage device.
9. Connect the external device to the A360 Personal Mixer and load a Mixer Configuration according to the instructions provided below.

Recalling a Mixer Configuration on the A360

Once a Mixer Configuration and its associated Mix Presets have been saved onto a USB memory device, the configuration can be loaded into the A360. Loading a configuration replaces the Mix Presets and any previously loaded configuration in the A360; there is no undo.

To recall a configuration:

1. Connect the USB memory device to the USB port on the rear of the A360 Personal Mixer.
2. Move the rear-panel switch on the A360 to the **PROGRAM** position; The **SAVE** and **RECALL** LEDs flash and the A360 mixing interface is temporarily disabled.
3. Press the **RECALL** button.
4. The **SAVE** LED goes out and all 16 mix channel buttons begin to flash.
5. Press the numbered mix channel button that corresponds to the configuration you wish to load.
6. The yellow Mute LEDs beneath the mix channel buttons light in sequence as a confirmation that the configuration has been loaded successfully.
7. Move the rear-panel switch on the A360 to the **CUSTOM** position to use the new channel layout and Mix Presets.
8. The USB memory device can be safely removed.

✓ **NOTE:** When a Mixer Configuration file is loaded from a USB device it replaces any previously loaded channel configuration; all Mix Presets in the A360 are replaced with those stored in the Mixer Configuration.

Sample Input List

Print this input list to simplify network slot management.

Device	Input		Source	Stereo
	1	L		
	2	R		
	3	L		
	4	R		
	5	L		
	6	R		
	7	L		
	8	R		
	9	L		
	10	R		
	11	L		
	12	R		
	13	L		
	14	R		
	15	L		
	16	R		
	1	L		
	2	R		
	3	L		
	4	R		
	5	L		
	6	R		
	7	L		
	8	R		
	9	L		
	10	R		
	11	L		
	12	R		
	13	L		
	14	R		
	15	L		
	16	R		

Index

A

A360
 Program switch 25
A360 Personal Mixer 20, 25
 Custom mode 16
Adobe Reader 9
All Programs menu 8
Ambience 12, 15
application folders 9
Aviom folder 9, 20, 25

B

boot drive 18

C

Channel Button 11, 12, 16
channel map 10
Channel Status 11, 16
Computer Requirements 3
Configuration Number 17, 18, 19, 21, 22
Control Panel
 Windows OS 8
Copying Mixer Configurations 25
Custom mode 1
 A360 16

D

default 18, 20
default install location 8, 9
Documents folder 9
double dash 14
Drive 18
Drive menu 20
drop-down menu 14, 15
Dual Profile Channel 12, 16

E

Error 14, 15, 16
 Stereo Link 12

extension 23
external device 20

F

folder
 Preset Group 23
folder path 20
folders 9
format 20

I

Input List 26
Installing 3
Instant Mix Recall 24

L

License 5
Load 17, 18
Load Button 17, 19
load Mixer Configuration 19, 20

M

Mac OS 3
mix channel button 12, 16, 24
Mixer Configuration 1, 10, 16, 17, 18, 21, 25
Mix Preset 18, 19, 20, 21, 23, 24, 25
Mono 12, 14

N

Network Slot Assignment 11, 14
no slot assignment 15

O

OK 16
Onboard Mic 15
overwrite a file 22

P

Preset Group 23, 24
Pro16 3
Pro16e network 12
Pro64 3
Program switch
 A360 25

R

radio button 11, 12
ReadMe 5
Recall button 25
Removing the Application 8
rename 18
Requirements 3
root directory 20

S

Save 16, 20, 21
Save Button 17, 22
Save LED 25
Select a Mixer Configuration 18
Slot Assignment 11, 14, 15, 16
Software License 5
Status 14, 15
Stereo 12, 14
Stereo Link 11, 12, 16
Stereo Link switch 12
Storage Device 20

U

Unassigned 13, 15, 16
uninstall 4
USB memory stick 20, 25
user-created files 8

W

warning message 19, 22
What Gets Installed 9
What Gets Saved 23
Windows 7 8

Windows 8 3
Windows Control Panel 4
Windows OS 8

SOFTWARE LICENSE AGREEMENT

This software license agreement (this “Agreement”) is made by and between AVIOM, INC., a Delaware corporation (“*Aviom*”), and the individual or entity desiring to install or use the Software (as defined below) (“*Licensee*”). By clicking the “I Agree” button, Licensee: (1) represents that Licensee has read this Agreement in its entirety and understand its terms and conditions; and (2) agrees to each of the terms and conditions of this Agreement. If you do not agree to each of the terms and conditions of this Agreement, then you must click the “I Decline” button and you may not install or use the Software.

DEFINITIONS.

“*AVIOM PRODUCT*” SHALL MEAN THE PRODUCT OF AVIOM INTO WHICH THE FIRMWARE IS INTENDED TO BE INSTALLED.

(a) “*Firmware*” shall mean the firmware provided by Aviom that is intended to be installed into a specific product of Aviom.

(b) “*Installation Software*” shall mean the software provided by Aviom to enable Licensee to install the Firmware into the Aviom Product.

(c) “*Software*” shall mean both the Installation Software and the Firmware, collectively.

1. Grant of License. Subject to the terms and conditions of this Agreement, Aviom grants Licensee a limited, non-exclusive license to the object code version of the Software (the “*License*”). The License permits Licensee to install and use the Installation Software on a single workstation and use the Installation Software to flash the Firmware into the Aviom Product(s). The License also grants Licensee the right to use the Firmware on all Aviom Products owned by Licensee. Licensee may also use the documentation included with the Software, if any, (e.g. help files, release notes, and readme.txt files) (collectively, “*Documentation*”) as is reasonable and necessary for Licensee to use the Software.

2. Compensation. There is no charge for use of the Software by Licensee under the terms and conditions of this Agreement.

3. Ownership. Licensee acknowledges that: (a) the Software is and shall remain the exclusive property of Aviom and Aviom’s successors and assigns; (b) Licensee has no right or interest in the Software or the Documentation other than as expressly granted in this Agreement; (c) nothing in this Agreement shall be construed as a sale of the Software or the Documentation to Licensee; and (d) all intellectual property rights shall remain with Aviom and the Agreement shall not transfer any intellectual property rights in, or associated with, Software or the Documentation to Licensee.

4. Transfer of License; Copy Protection. Licensee may not rent, loan, transfer, sublicense, lease or otherwise distribute or operate all or any part of the Software to or for the benefit of any third party. Licensee may not assign all or any part of its rights or obligations under this Agreement without Aviom’s prior written consent and any attempt to the contrary will be void and a material breach of this Agreement. Aviom may withhold such consent in its sole discretion.

Other Restrictions. Licensee may not reverse engineer, decompile, disassemble, modify or create derivative works of all or any part of the Software or otherwise derive the source code to all or any part of the Software. Without limiting the generality of the foregoing, Licensee shall not use a debugging tool to examine, operate or alter all or any part of the Software or run all or any part of the Software through a disassembly or source extraction system of any kind or create any derivative work of all or any part of the Software. Licensee agrees that any information obtained in violation of the restrictions as set forth in this Section 6 will be

Confidential Information automatically and irrevocably deemed assigned to and owned exclusively by Aviom. Licensee will ensure that all marks, notices or legends pertaining to the origin, identity or ownership of the Software or the Documentation remain intact and clearly legible. Notwithstanding anything contained in this Agreement to the contrary, if Licensee is located in the European Union and Licensee determines that access to the source code to the Software is necessary to achieve interoperability of the Software with other programs, then Licensee may reverse engineer the Software provided that: (a) Aviom has not already made available to Licensee the information necessary to achieve interoperability; and (b) Licensee limits its reverse engineering activities to those parts of the Software which are necessary to achieve interoperability with such programs.

Copyright.

(a) The Software and the Documentation contain proprietary material of Aviom and/or material that other software and/or information suppliers have licensed to Aviom for use in the Software. This material is protected by copyright and other laws respecting proprietary rights. Aviom and/or its licensors retain all rights in the Software and the Documentation, including (without limitation) all copyright and other proprietary rights worldwide in all media. Licensee may not use all or any part of the Software or the Documentation except as expressly permitted under this Agreement and under U.S. and/or other applicable copyright laws.

(b) While Licensee may make a reasonable number of copies of the Software and the Documentation solely for archival/back-up purposes, no part of the Software or the Documentation may be used, reproduced or duplicated in any medium or format beyond the express terms of this Agreement without prior written authorization from Aviom. Any use or reproduction not authorized by this Agreement is prohibited and shall immediately terminate this Agreement.

(c) Licensee acknowledges that the Software and the licensed materials therein are highly proprietary in nature and that unauthorized copying, transfer or use may cause Aviom irreparable injury that cannot be adequately compensated for by means of monetary damages. Licensee agrees that any breach of this Agreement by Licensee may be enforced by Aviom by means of equitable relief (including, but not limited to, injunctive relief) without the necessity of posting any bonds in addition to any other available rights and remedies.

5. Termination.

(a) Termination. If Licensee: (i) makes or distributes, or fails to prevent others in its control from making or distributing, copies of the Software or the Documentation (except as expressly permitted by this Agreement) or modifications or derivations thereof; or (ii) breaches any provision of this Agreement, then this Agreement shall terminate automatically.

Effect of Termination. Upon any termination of this Agreement, Licensee shall: (i) immediately discontinue use of the Software and the Documentation; (ii) remove the Installation Software and the Documentation from all of Licensee's workstations; and (iii) delete and destroy all copies of the Software and the Documentation in its possession or control. Sections 4, 5, 6, 7, 8(b) and 9 through 12 shall survive the termination or expiration of this Agreement for any reason in accordance with their respective terms.

6. Disclaimer of Warranties. AVIOM LICENSES AND PROVIDES THE SOFTWARE AND THE DOCUMENTATION TO LICENSEE ON AN "AS-IS" BASIS. AVIOM HEREBY DISCLAIMS ANY AND ALL WARRANTIES AND CONDITIONS WITH REGARD TO THE SOFTWARE AND THE DOCUMENTATION, INCLUDING, BUT NOT LIMITED TO, ALL IMPLIED WARRANTIES AND CONDITIONS OF MERCHANTABILITY, FITNESS FOR A PARTICULAR PURPOSE, ACCURACY, TITLE AND NON-INFRINGEMENT.

7. Limitations of Liability.

(a) General. IN NO EVENT WILL AVIOM BE LIABLE FOR DAMAGES ARISING OUT OF THE USE OR LICENSING OF THE SOFTWARE OR THE DOCUMENTATION OR ARISING UNDER THIS AGREEMENT, WHETHER IN TORT, CONTRACT OR OTHERWISE, TO LICENSEE OR ANY OTHER PERSON OR ENTITY INCLUDING ANY DAMAGES CAUSED TO AVIOM PRODUCTS FROM USE OF ALL OR ANY PART OF THE SOFTWARE.

(b) Consequential Damages, Etc. AVIOM SHALL IN NO EVENT BE LIABLE TO LICENSEE OR ANY OTHER PERSON OR ENTITY FOR ANY LOST PROFITS, OR CONSEQUENTIAL, INCIDENTAL, INDIRECT, PUNITIVE, SPECIAL, OR SIMILAR DAMAGES, INCLUDING, WITHOUT LIMITATION, DAMAGES FOR LOSS OF DATA, DAMAGES TO HARDWARE INCLUDING BUT NOT LIMITED TO AVIOM PRODUCTS, IMPAIRMENT OR LOSS OF GOODWILL, WORK STOPPAGE, COMPUTER FAILURE OR MALFUNCTION, AVIOM PRODUCT FAILURE OR MALFUNCTION, LOSS OF WORK PRODUCT, OR ANY AND ALL OTHER COMMERCIAL DAMAGES OR LOSSES, DIRECT OR INDIRECT, WHETHER IN TORT, CONTRACT, OR OTHERWISE, EVEN IF ADVISED OF THE POSSIBILITY OF SUCH DAMAGES.

(c) THE LIMITATIONS OF LIABILITY SET FORTH IN THIS SECTION (I) REFLECT AN ALLOCATION OF RISK GIVEN THE AMOUNTS PAYABLE UNDER THIS AGREEMENT AND (II) SHALL REMAIN FULLY OPERATIVE EVEN IF THE LIMITED REMEDY SET FORTH IN THE AGREEMENT FAILS OF ITS ESSENTIAL PURPOSE OR IS OTHERWISE HELD TO BE UNENFORCEABLE.

8. Export Regulations. The transfer of technology across national boundaries is regulated by the U.S. Government. Licensee agrees that Licensee shall not: (a) acquire, ship, transport, export or re-export the Software, directly or indirectly, into any country in violation of any applicable law (including, but not limited to, the United States Export Administration Act and the regulations promulgated thereunder); or (b) use the Software for any purpose prohibited by such laws.

9. Miscellaneous.

(a) Governing law; Jurisdiction. The validity, interpretation, rights and obligations of the parties and any dispute arising under this Agreement shall be governed by the laws of the Commonwealth of Pennsylvania applicable to contracts between residents of Pennsylvania and wholly performed in Pennsylvania. Neither the United Nations Convention on the International Sale of Goods, the 1974 Convention on the Limitation Period in the International Sale of Goods, nor any amendment or protocol to either of the foregoing shall apply to this Agreement or the activities undertaken under or in respect of this Agreement. The state and federal courts with jurisdiction over Chester County, Pennsylvania shall have exclusive jurisdiction over any case, controversy or dispute concerning this Agreement or its performance or the Software; provided that Aviom may seek injunctive relief in any court of competent jurisdiction.

(b) Severability. If any provision of this Agreement shall be determined to be void, invalid, unenforceable or illegal for any reason, then the validity and enforceability of all the remaining provisions hereof shall not be affected thereby.

(c) Failure to Exercise Rights. The failure of either party to exercise any of its rights under this Agreement for a breach thereof shall not be deemed to be a waiver of those rights or a waiver of any subsequent breach of the same or any other provision.

(d) Titles. The titles of the Sections of this Agreement are for convenience only and do not in any way limit or amplify the terms and conditions of this Agreement.

(e) Entire Agreement. This Agreement constitutes the entire understanding between the parties with respect to the subject matter of this Agreement and supersedes any and all prior and contemporaneous understandings, statements, warranties, representations and agreements, both oral and written, relating thereto. This Agreement cannot be modified except in a writing signed by the party against whom enforcement is sought.

AVIOM[®]

1157 Phoenixville Pike, Suite 201 • West Chester, PA 19380 USA
Voice: +1 610.738.9005 • Fax: +1 610.738.9950 • www.Aviom.com