

**POWER**

The Swollen Pickle Fuzz can be powered by a single 9V battery or with a Dunlop ECB-003 external DC power supply. The power input is a 5.5mm x 2.1mm jack with the positive voltage on the outer sleeve. Using an external power supply will disconnect the battery. Disconnect the input jack to preserve battery life when not in use. The pedal will lock into bypass mode when it is time to change the battery. It also includes power protection circuitry to prevent damage from AC power supplies.

**SPECIFICATIONS**

INPUT IMPEDANCE.....> 36kΩ

OUTPUT IMPEDANCE.....< 26kΩ

**SIGNAL TO NOISE RATIO**

(all controls at MID position).....> 82dBV 'A' Weighted

BYPASS.....True Bypass

DIMENSIONS...4-25/32" x 3-3/4" x 1-3/4"

WEIGHT.....14oz.

CURRENT DRAW.....3.1mA (9V DC)

POWER SUPPLY.....Standard 9V battery,  
Dunlop ECB-03 AC Adapter, Dunlop DC Brick,  
or CAE MC-403.

\*0dBV = 1Vrms

Features: heavy-duty footswitch with quiet relay-based true bypass, blue LED indicator, 5.5mm x 2.1mm power jack with AC protection, easy access non-detachable battery door, super-duty 0.09" aluminum anodized chassis, high grade components, great tone and cool name.



LIVE TO PLAY LIVE®

JIMDUNLOP.COM wayhuge.com

DUNLOP MANUFACTURING, INC. P.O. BOX 846 BENICIA, CA 94510 U.S.A.  
TEL: 1-707-745-2722 FAX: 1-707-745-2658 WWW.JIMDUNLOP.COM

© 2008 DUNLOP MFG. INC.

92503006786



**Swollen Pickle™** mkII

**WAY HUGE**  
ELECTRONICS

WHE-401

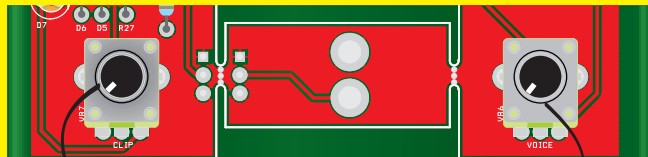
Swollen Pickle mkII  
instruction manual

**The most sought after and corpulent Way Huge pedal is back!**

A charter member of the Way Huge line has returned, and just as it debuted in 1997, it still has "more fuzz than a moldy peach!"

The Swollen Pickle MkII surrenders super high-gain fuzz with copious amounts of smooth low-end to all who dare plug into it. With a twist of the SUSTAIN control, you're taken from mild crunch to Armageddon! The FILTER control retains its trademark insane range of heavily band-pass-filtered tones distinguished by remarkable girth and sizzle, and the LOUDNESS puts out enough volume to clobber any amp! Newly added features include a tone stack SCOOP control that elicits classic Swollen Pickle mid-scoop or flat mid-frequency sweep, and a CRUNCH knob to adjust the compression intensity of the fuzz. Finally, under the hood, the Swollen Pickle MkII has two internal mini controls: VOICE sets the intensity of the external SCOOP control from light to heavy mid cut, and CLIP varies between two sets of clipping diodes for smooth or opened fuzz sustain.

SWOLLEN PICKLE INTERIOR DRAWING:  
(UNSCREW THE 4 RUBBER FEET TO ADJUST THE INTERNAL TONE CONTROLS)



CLIP - VARIES BETWEEN SMOOTH OR OPENED FUZZ SUSTAIN

VOICE - SETS THE INTENSITY OF THE EXTERNAL SCOOP CONTROL

