

POD

VERSION 2.0

NEW FEATURES

Rev A. Electrophonic version available at www.line6.com.

NEW GOODIES IN 2.0

Version 2.0 software enhances the already beloved POD with a host of new features and improvements requested by the growing community of POD users, or dreamed up by the product design crew at Line 6. This publication gives you all the details.

WE'RE LISTENING

Before we dive into the new stuff, this is a good time to let you know that if you've got ideas about products and features, we want to hear them! A lot of the new goodies that await you in POD 2.0 software were suggested to us by happy POD owners. We invite you to email ideas@line6.com with your own thoughts about features for your POD or other products you'd like to see from Line 6. If you're not up on the email thing yet, you can call and talk to our customer service team, or track down one of our Product Specialists – the roving band of Line 6 evangelists that help support Line 6 products at your local dealer. At Line 6, we're eager to work with you to create the tools that help all of us make great music.

OVERVIEW

The following pages cover everything in detail, but we figured you'd want a little overview to get you started:

NEW FEATURES

32 Amp Models – POD now includes 32 Amp Models (before 2.0, it was 28), and they're all available right from the front panel knobs (so you no longer have to use SoundDiver software to access more than Amp Models 1-16). Hold the **Tap** button and turn the Amp Models knob to get amps 17-32; details on the new Amp Models are in the pages ahead.

Mix 'n' Match Cabinet Models – POD has always allowed you to access a variety of speaker cabinet models via SoundDiver. Now you can do it right from POD: Hold the **Tap** button and turn the Effects knob to choose cabs; details on the Cabinet Models are in the pages ahead.

Customization – The Amp Models and Effects knobs now set more than just the Amp Model or Effect selection. When you turn to the Rectifier Amp Model, say, the Drive, Bass, Mid, Treble, etc. will be set automatically to give you an awesome ready-to-rock tone – so with one knob twist, you're ready to go. The Effects knob works the same way. Even cooler, you can set exactly what the memorized settings are for each of the Amp Models and Effects knob positions, and thereby customize your POD tones to reflect your very own sonic genius or depravity. The **MANUAL** button, as always, lets you override these automatic settings for the where-the-knobs-are-is-how-it-sounds experience. We go into it all in the pages ahead.

ToneTransfer – All those folks with PODs have been busy using them to make some incredible sounds, and our ToneTransfer system lets you take advantage of all that sonic creativity. Number one, all the sounds you use in your POD can be transferred to (and from) any Flexitone II series amplifier or the new POD Pro. Number two, an expanding library of these sounds is available for you at www.line6.com. Log in and search the library by musical style, artist, and more, to find just the sounds you're

looking for. And while you're there, we invite you to add your own great tones to the library. We'll be continually adding to this great collection of sounds ourselves as well, to make it *the* place for great guitar tone.

Tuning POD for use with amplifiers – POD has always had an AMP/DIRECT switch for optimizing POD to run in various setups. The DIRECT position is used when you're running POD directly into your mixer or recorder. The AMP position is used when you're using POD as a tone-shaping front-end for another guitar amplifier. We've now added a choice of tuning modes for the AMP position, selectable at power up. By default, POD expects to be plugged into the guitar input of an open-backed combo. But with the new tuning modes, you can alternatively optimize your POD to run into the power amp input of a closed-back system, or with closed-back cabinets. Details are in the pages ahead, along with some illustrations that folks suggested would be helpful for getting PODsters plugged in and happening with a variety of setups.

IMPROVEMENTS

While we were in there adding the new features to POD, we also took the time to make a few additional improvements:

Faster Channel Switching – Channel switching has been made more intelligent, and is faster and smoother as a result. When changing channels, POD only updates those parameters that change from one channel to another. So, for instance, if two channels have all the same settings except the reverb level, switching between them means POD only updates the reverb level. That means the channel switch is nearly instantaneous, and as glitch-free as possible.

New SoundDiver – The SoundDiver software has also been updated, and now includes support for the Flexitone II amplifiers, POD Pro, and POD 2.0 as well as original PODs (be sure to check the Support section of www.line6.com for the latest free SoundDiver download).

Better Tuner – The chromatic tuner now tracks faster and more accurately.

AMP MODELS

Before Version 2.0 software, POD had 28 Amp Models – 16 available from the **Amp Models** knob, and the rest available from the SoundDiver “Deep Editing” software, or the factory presets that use these models. POD users asked us to find a way to give them easy access to all the Amp Models right from their POD without the computer, so that’s just what we did with version 2.0. And we added 4 additional Amp Models to the menu while we were at it:

Amp Models 1-16: Turn the **Amp Models** knob to select Amp Models 1-16. The names of these Amp Models are labeled around the knob.

Amp Models 17-32: Hold the **Tap** button and turn the **Amp Models** knob to select Amp Models 17-32. The table below shows which Amp Model lives at each knob position:

(Hold Tap and turn to:)	Amp Models 17-32	Based on
(Line 6 Clean)	Line 6 Twang*	Fender Deluxe and Bassman
(Line 6 Crunch)	Line 6 Crunch #2*	'68 Marshall Plexi 50 watt
(Line 6 Drive)	Line 6 Blues*	Marshall JTM-45 meets Budda Twinmaster
(Line 6 Layer)	Line 6 Insane*	Way too many hours of shredding
(Small Tweed)	Small Tweed #2	'60 Tweed Fender Champ
(Tweed Blues)	Boutique #3	Budda Twinmaster head
(Black Panel)	Black Panel #2	'65 Blackface Fender Twin
(Modern Class A)	Brit Class A #3	'60 Vox AC 15
(Brit Class A)	Brit Class A #2	'60 Vox AC 30 non-Top Boost
(Brit Blues)	California Crunch #1	'85 Mesa Boogie Mark IIc+ Clean Channel
(Brit Classic)	California Crunch #2	'85 Mesa Boogie Mark IIc+ Drive Channel
(Brit Hi Gain)	Boutique #1	Dumble Overdrive Special Clean Channel
(Rectified)	Rectified #2	'95 Mesa Boogie Dual Rectifier Head
(Modern HiGain)	Modern HiGain #2	'89 Soldano SLO Super Lead Overdrive
(Fuzz Box)	Boutique #2	Dumble Overdrive Special Drive Channel
(Tube Preamp)	Jazz Clean	1987 Roland JC-120 Jazz Chorus

**These models are new in 2.0.*

Here are the descriptions for these new Amp Models:

Line 6 Twang (Hold Tap + Line 6 Clean) - This model draws on our analysis of the '60s Fender blackface Deluxe amps and the '50s Fender Bassman. (It includes the classic Fender glassy high end, plus the snap and bite of these vintage amps.) Things don't really get too crunchy until you get to the top range of the **Drive** knob. The tone controls provide more range than the blackface Deluxe or Bassman.

Line 6 Crunch #2 (Hold Tap + Line 6 Crunch) - This sound was crafted during our studies of the '68 50 Watt Marshall Plexi. But unlike the Plexi, this Amp Model provides more wide-ranging tone controls. With the Plexi, once you're overdriven, the tone controls really don't do much, but POD will allow you to scoop out the mids even at the highest **Drive** settings.

Line 6 Blues (Hold Tap + Line 6 Drive) - This tone is based on the '65 Marshall JTM-45 Bluesbreaker but incorporates wider range tone controls. Once you get into higher **Drive** settings, this Amp Model begins to transition into a variant of the Budda Twinmaster (a high end boutique amp) for sweeter overdrive tonality.

Line 6 Insane (Hold Tap + Line 6 Layer) - Our goal here was to provide you with as much input gain distortion as possible short of complete meltdown. You get ridiculous, rich tube drive to shame the distortion of pretty much any amp on the planet (sort of like a Dual Rectifier on 10 being used as a preamp for a Soldano), while still retaining tonal definition and character. As a result, you get way lots of bottom end and cabinet character with tons of wide-ranging tone shaping. Crank up the **Drive** control and take no prisoners!

MIX 'N' MATCH CAB MODELS

Before version 2.0, POD had Cabinet Models that were automatically selected with each Amp Model, and you could change the Cabinet Model selection from the SoundDiver software. The folks who used SoundDiver realized this was a very cool thing, and asked us to give them a way to access the full selection of these Cabinet Models when they were away from their computer as well. So that's what we did:

Selecting Cabinet Models: Hold the **Tap** button and turn the **Effects** knob to select one of the sixteen cabinet model selections.

Here are the Cabinet Models available:

1x8	1960 Fender Tweed Champ
1x12s	1952 Fender Tweed Deluxe
	1960 Vox AC-15
	1964 Fender Blackface Deluxe
	Line 6 1x12
2x12s	1965 Fender Blackface Twin
	1967 Vox AC-30
	1995 Matchless Chieftain
	Line 6 2x12
4x10s	1959 Fender Bassman
	Line 6 4x10
4x12s	1996 Marshall with Vintage 30s
	1978 Marshall with stock 70s
	1968 Marshall Basketweave with Greenbacks
	Line 6 4x12
No Cab	You will probably want to use this Cabinet model with the Tube Preamp model for non-guitar sources. It is selected by default when you pull up the Tube Preamp Amp Model.

CUSTOMIZATION

New with Version 2.0 software, you can customize the settings that are called up by the **Amp Models** and **Effects** knobs. Using this powerful new feature, you can pack your POD with all the special sound genius that only you possess, and have this brilliance available instantly at the turn of a single knob. To understand how this Customization works, we'll start with an explanation of what happens when you turn the **Amp Models** and **Effects** knobs: Turning the **Amp Models** knob picks an Amp Model, and turning the **Effects** knob picks an effect, right? Actually, each of these knobs is setting a number of parameters behind the scenes. When you pick an Amp Model, POD sets the following controls to values determined by the **Amp Models** knob:

Controls affected by the Amp Models Knob
Amp Model
Cabinet Model
Drive (and also Drive 2, if Amp Model is Line 6 Layer)*
Bass
Middle
Treble
Bright Switch (if available on Amp Model) *
Channel Volume
Distortion On/Off (Hold Tap, turn Drive to set)
Volume Boost On/Off (Hold Tap, Turn Channel Volume to set)
Presence Bump On/Off (Hold Tap, Turn Treble to set)
Presence Level
Reverb Decay
Reverb Type *
Reverb Tone *
Reverb Diffusion *
Reverb Density *
Noise Gate Decay Time *
Volume Pedal Location (before or after the Amp Model) *
Volume Pedal Minimum *
Wah Minimum *
Wah Maximum *

*You only get access to these extra controls via the SoundDiver software or MIDI.

In the same way, turning the **Effects** knob sets all the parameters related to the effect you choose.

Customization allows you to store your own personal favorite adjustments for all these parameters so they live on the 16 positions of the **Amp Models** and **Effects** knobs. This way, when you turn the **Amp Models** knob to the Rectifier position, you'll get *your* personal Rectifier, with all the controls in the list above set for your very own version of the Rectifier. Same thing for the **Effects** – *your* Chorus, Tremolo, etc. is always just one knob click away.

So where is stuff going to be saved, exactly? If you're customizing the Amp Model, then you'll be saving to the knob position of the selected Amp Model. For instance, if your sound uses the Rectifier, and you do the Customized Save of the Amp settings, you will now get those settings whenever you turn the knob to the Rectifier position. Alternatively, if your sound uses the Small Tweed, then doing the Customized Save will save your settings there. Your POD will choose the correct place to store the information *regardless of the present physical position of the Amp Models encoder* – so don't worry, you can't accidentally copy your Modern HiGain settings to the Small Tweed position. Same deal goes for the effects; your POD knows whether you're using Tremolo or Rotary Speaker or whatever, and will save to that knob position.

So what if you're not sure *which* Amp Model or effect you are using right now, and want to find out before you make your Customization? That's easy, too:

Just press (and keep holding) the **Save** button and turn the **Amp Models** or **Effects** knob. Once you have them in the right position, both the arrows for the tuning indicator will light up. The **Tap** light will also light solid if your Amp Model is part of the second “layer” of models (17-32).

So, now that you know exactly what you're getting yourself into, lets get to it:

Activating Customization Mode

The first thing to do is get an Amp or Effect setting that you really like and want to store to the **Amp Models** or **Effects** knob. This amp or effect setting can come from a factory preset, one of your own edits, a sound you downloaded off the web, or a sound you've tweaked up in SoundDiver. Whatever its source, all you have to do is get that sound into your POD so it's active and you're playing though it.

With that done, you'll hold (and keep holding) the **Save** button, then press the **Manual** button. The **Save**, **Manual**, **A** and **B** lights will all start a-flashing (and you can let go of those buttons now). You have entered the *Customization Mode*. If you use the **Up/Down** buttons to select **A** now, you will instruct your POD that you want to save your present Amp settings to live on the **Amp Models** knob. If you select **B**, your POD will understand that you want to save your current effects setting to the **Effects** knob. Got it? Here are the steps in handy list form:

1. **Get an amp or effect you love happening on your POD.**
2. **Hold Save, and press Manual. Save, Manual, A, and B lights flash.**
3. **Use Up/Down arrows to select A (Amps) or B (Effects).**
4. **Press Save to complete the deed. (Or press Manual to abort.)**

TONETRANSFER

With your POD, you get a constantly-expanding universe of sounds, and the ability to use those sounds with POD, POD Pro, or the Flextone II series amplifiers. Use your POD in the studio or for practice, and then transfer your sounds to a Flextone II amp for your gigs. Or transfer sounds from your friend's Flextone II into your POD.

You'll also want to be sure to visit our ToneTransfer Web Library at **www.line6.com**. Check out the library of tones, searchable by artist, musical style and more. Or brew up a few custom POD tones yourself, and add them to the library for the world to share. It's part of our effort to insure that your POD and the rest of the Line 6 product line are some of the most powerful tools available for you and your music.

TUNING POD FOR USE WITH AMPLIFIERS

POD can be used as a powerful tone-shaping front end for another guitar amplifier, or as a supremely versatile preamp, driving a power amp and speaker cabinets. New with Version 2.0, we've provided you with several optimized tunings for different scenarios, to help you get the best sound from several different kinds of setups.

New Cabinet Tuning Modes

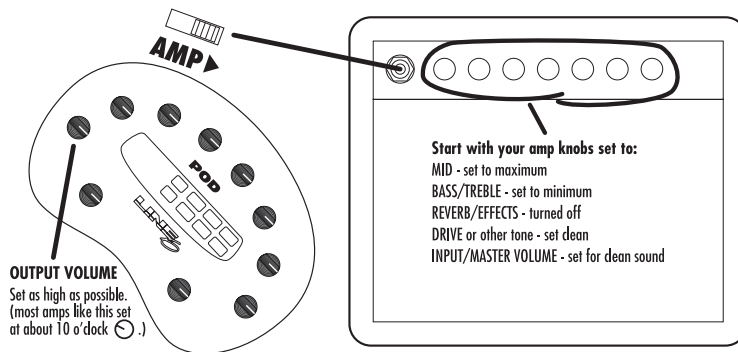
By default, your POD expects to be plugged in before an open-backed cabinet. If you want to plug into something else, you'll want to change the Cabinet Tuning Mode. To do this, follow the easy steps on the opposite page.

1. Hold the **Save** button while powering up your POD. The POD's display will show a letter for one of the Cabinet Tuning Modes.
2. Press the **Up** and **Down** arrows to pick the mode (see table below),
3. Then press **Save**. POD remembers this setting from now on.

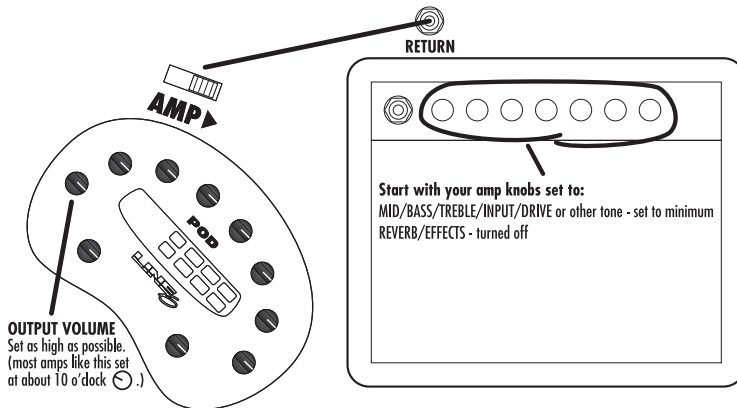
Use Mode...	when POD is...	& your speaker cabs are...
A	feeding power amp	closed back (<i>ideal for 4x12 cab</i>)
B	feeding power amp	open back (<i>ideal for 1x12 or 2x12 cab</i>)
C (default)	in front of combo/head	open back (<i>ideal for 1x12 or 2x12 cab</i>)

If you are going to use your POD in front of another guitar amp, or feeding a power amp and speakers, you may find the following illustrations handy. In all cases, you'll be plugging the left output of your POD into your amp's input for mono operation. Experiment to get the best from your setup; try the A.I.R. switch in the DIRECT position (this can work great with smaller amps) and also try other knob settings on your amp:

POD As Front End for a Combo Amp or Head



POD In Insert/Return of a Combo Amp or Head



POD Into a Power Amplifier Driving Speaker Cabinets

