

# Appendix C: Technical Info

## Specifications

### Frequency Response :

Mic Input to any Output: (Trim at 0 dB):	+0, -1 dB
	20 Hz to 20 kHz
Line/CD Input to any Output:	±0.5 dB
	20 Hz to 20 kHz
Phono input to any Output:	±1 dB of RIAA EQ curve

### Distortion (THD and IMD):

THD @ Main Output, 20 Hz to 20 kHz	
Mic Input @ 30 dB Gain:	Less than 0.0075%
Line/CD Input @ 0 dB Gain:	Less than 0.0075%
Phono Input:	Less than 0.01%
THD @ Phones Output, 20 Hz to 20 kHz	
Line Input @ 0 dB Gain:	Less than 0.03%
SMPTE IMD @ +4 dBu Output:	
Mic Input @ 30 dB Gain:	Less than 0.008%
Line/CD Input @ 0 dB Gain:	Less than 0.008%

### Common Mode Rejection Ratio (CMRR):

Mic Input (Gain = maximum)	Greater than 60 dB @ 1 kHz
----------------------------	----------------------------

### Crosstalk:

Adjacent Inputs or Input to Main Output:	Less than -85 dB @ 1 kHz
--	--------------------------

### Noise Characteristics:

Equivalent Input Noise (E.I.N.) (20 Hz to 20 kHz):	
Mic Input (150 Ω source impedance):	Less than -123 dBu
Phono Input (500 Ω/500 mH source impedance):	Less than 0.3 μV
CD/Line Input (150 Ω source impedance):	Less than -110 dBu
Dynamic Range (Main Out):	Greater than 100 dB

### Maximum Input Levels (rated at 1% THD):

Mic Input (Gain @ minimum):	+9 dBu
CD and Line Inputs (PGM Gain = 0 dB):	+22 dBu
FX Input:	+22 dBu
Phono Input:	78 mV @ 1kHz

### Input/Output Characteristics:

Input Gain Control Range:	
Mic Input:	+13 dB to +63 dB
PGM Input:	OFF to +13 dB
FX Return:	OFF to +13 dB

### Input Impedance:

Mic Input:	2.4 kΩ balanced
CD/ Line Input:	20 kΩ balanced
FX Return:	20 kΩ balanced
Phono Input:	47.5 kΩ shunted with 200 pF

### Maximum Output Levels:

XLR Main Output:	+22 dBu
RCA Main Output:	+22 dBu
Booth Output:	+22 dBu
FX Send:	+22 dBu
Phones:	15 volts rms into 8Ω (28 watts)

### Output Impedance:

Main XLR/RCA Output:	150 Ω
Booth Output:	150 Ω
FX Send:	150 Ω
Phones:	25 Ω

### Equalization

Mic Channel	
Low:	±15 dB @ 80 Hz
Mid:	±15 dB @ 2.5 kHz
High:	±15 dB @ 12 kHz
PGM Channel	
Low:	+10/-inf dB @ 300 Hz
Mid:	+10/-inf dB @ 1 kHz
High:	+10/-inf dB @ 4 kHz

### VU Meters

12-segment pre-fader PGM meters	
12-segment pre-fader Main Mix meters	
OL (+20), +10, +7, +4, +2, 0, -2, -4, -7, -10, -20, -30	
0 LED = +4 dBu	
Mic Input Signal Present LED (Sensitivity):	-20 dBu

continued

**AC Power Requirements:**

Power Consumption:	20 watts
Universal AC Power Supply:	100 VAC – 240 VAC, 50-60 Hz

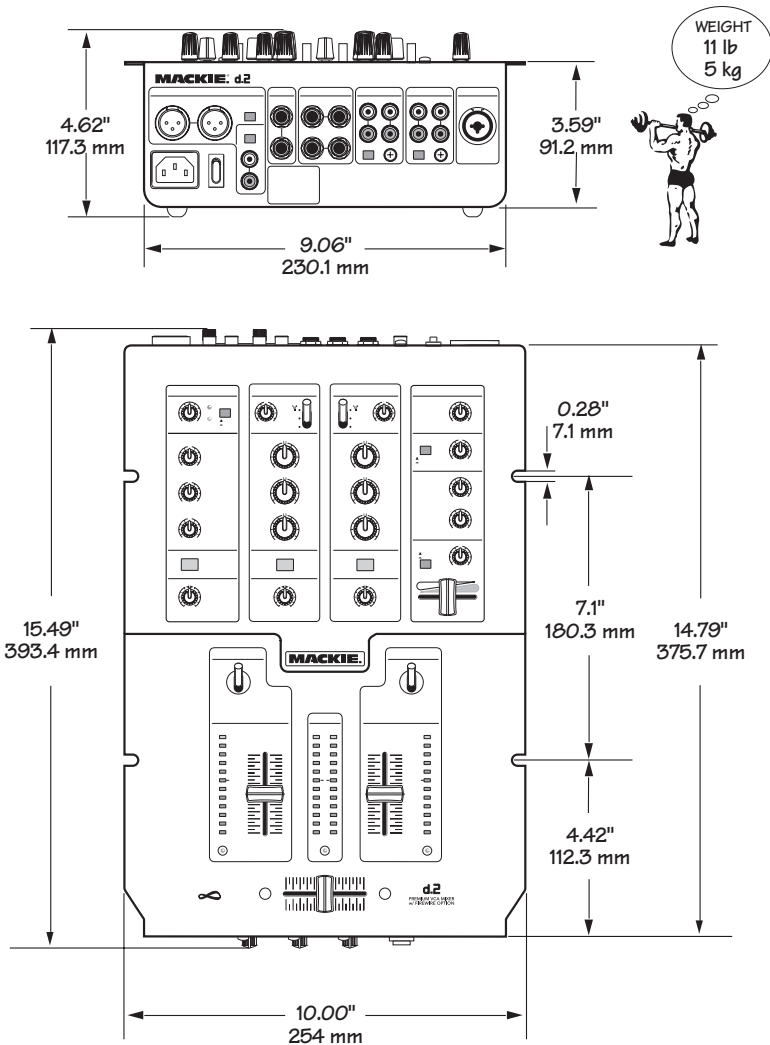
**Physical Dimensions and Weight:**

Height:	15.49"/393.4 mm (including knobs and connectors)
Width:	10"/254 mm
Depth:	4.62"/117.3 mm (including knobs and connectors)
Weight:	11 lb/5 kg (with FireWire card)

The d.2 mounting slots are compatible with the Odyssey Battle Bridge. This consists of two L brackets which bolt to the d.2 and allow you to fit it securely between two turntable cases. See [www.odysseygear.com](http://www.odysseygear.com) for more details.

**Options**

d.2 FireWire Interface Card



LOUD Technologies Inc. is always striving to improve our products by incorporating new and improved materials, components, and manufacturing methods. Therefore, we reserve the right to change these specifications at any time without notice.

“Mackie,” and the “Running Man” are registered trademarks of LOUD Technologies Inc. All other brand names mentioned are trademarks or registered trademarks of their respective holders, and are hereby acknowledged.

©2005 LOUD Technologies Inc. All Rights Reserved.