

# DiGiGrid

**M** USER GUIDE



## Table of Contents

Introduction .....	4
1. GETTING STARTED .....	5
1.1 System Requirements .....	5
1.2 Registration.....	5
1.3 Software Installation.....	5
1.4 Licenses .....	6
2. Hardware .....	7
3. Suggested Use and Configurations .....	8
3.1 One Computer with a DiGiGrid M.....	8
3.2 Adding More I/Os to Your System.....	9
3.3 Adding a Server .....	10
3.4 Multiple Computers with a Single DiGiGrid M .....	11
4. Software Setup and Controls .....	12
4.1 Device Firmware.....	14
4.1.1 Resetting the Unit.....	15
4.2 Identifying a Device from the SoundGrid Studio Device Rack.....	15
5. Control Panel .....	16
5.1 Clock Page .....	17

6. Adding a Server .....	19
6.1 Applications of an External Server .....	20
6.1.1 eMotion ST mixer .....	20
6.1.2 StudioRack.....	21
7. Moving Audio in a Soundgrid Network.....	22
7.1 Using an I/O Device with a DAW .....	23
7.2 Patching I/O to Driver and Driver to I/O .....	24
7.3 eMotion ST Mixer Patching .....	31
7.4 Device-to-Device Patching.....	32
8. Technical Specifications.....	33

## INTRODUCTION

Thank you for choosing this DiGiGrid Desktop interface for SoundGrid systems. In order to get the most out of your product, please take some time to read this manual. We also suggest that you become familiar with our support sites, [www.digigrid.net](http://www.digigrid.net) and [www.waves.com/support](http://www.waves.com/support), where you will find an extensive answer base, the latest tech specs, detailed installation guides, software updates, and current information about licensing and registration.

### DiGiGrid **M** is a SoundGrid interface designed especially for musicians

This is an easy-to-use, plug-and-play interface that's ideally suited for music settings. **M**'s top-quality converters and mic preamps provide audio capture of the highest order. There are two inputs. One is a dedicated mic/line input; the other is for instrument/line sources. A dedicated high-power headphone output produces a classic warm analogue control path. The unit has a non-slip base.

**M** is powered by a twist-lock 12V DC power supply (provided as standard). When a DiGiGrid **S** network switch is part of the SoundGrid network, the **M** interface does not need external power. It's instead powered through Power over Ethernet (PoE). The DiGiGrid **S** also enables networking up to four DiGiGrid devices, separated by as much 75 meters.

**M** is part of a SoundGrid network, so as your needs grow, you can connect extra I/Os and DSP from the rack-mounted DiGiGrid series. With a simple Ethernet connection to your Mac or PC running any DAW, you have a simple stand-alone, high-quality audio interface. The **M** interface can even be connected to multiple computers and DAWs at the same time.

#### **DiGiGrid S provides power over Ethernet for DiGiGrid D, M, Q interfaces.**

This switch enables **D**, **M**, and **Q** interfaces to operate without external power sources. It features one upstream (non-PoE) port, and four downstream PoE ports, which allows connection to four further DiGiGrid devices. The DiGiGrid **S** is the perfect complement to your growing networked audio system, both now and in the future.

# 1. GETTING STARTED

Aside from setting up your microphone preamps, there's not much you need to know to begin working with your DiGiGrid **M**.

## 1.1 System Requirements

- SoundGrid Studio runs on Mac and PC (consult the Waves website for current OS and DAW compatibility)
- Compatible native DAW (Logic, Cubase, Nuendo, Ableton, Pro Tools Native, and many more). A list of SoundGrid-compatible hosts is available at the Waves website.
- DiGiGrid **M** / SoundGrid Studio software installed on the host computer
- Cat 5e or Cat 6 Ethernet cables

## 1.2 Registration

To download DiGiGrid **M** software you will need to register your device at [www.digigrid.net](http://www.digigrid.net) or [www.waves.com](http://www.waves.com).

You must know the serial number of your DiGiGrid **M** in order to register it.

The serial number appears on a label on the back of the unit and on a sticker on the box.

Once you register you will receive two emails:

1. A notification that you can now download the installer
2. Instructions about authorizing your license

## 1.3 Software Installation

After you register your new DiGiGrid **M**, you can download Waves Central from the Downloads/Latest Version section of the Waves website.

- Launch Waves Central.
- Click "Easy Install & Activate." Any products that are not currently activated will appear on the list.
- Make sure that your DiGiGrid **M** driver and SoundGrid Studio are checked, and then click on the "Install & Activate" button.
- Restart your computer.

Since SoundGrid enables you to access an I/O device from any computer in the network, you will need to install the software on each connected computer.

The DiGiGrid **M** installer consists of:

- The DiGiGrid **M** hardware driver.
- The SoundGrid ASIO/Core Audio driver, which serves as a bridge between the DAW and the SoundGrid network.
- The SoundGrid Studio Application, which manages all SoundGrid network resources and assigns devices to computers.
- StudioRack, a software plugin rack, or chainer, that hosts up to eight plugins and can move their processing from the DAW to an external SoundGrid server. (External server not included.)
- eMotion ST, a software mixer that provides low-latency plugin processing and monitor mixing. Requires an external server.

## 1.4 Licenses

DiGiGrid Native I/O devices do not require a license to operate in a SoundGrid network. However, certain advanced features, such as using StudioRack and eMotion ST for low-latency recording and monitoring, or offloading processing from the host CPU, require a server and a SoundGrid license. This license is included with the purchase of DiGiGrid **M**.

When you register your device, the relevant licenses are deposited in your Waves account. Use the Waves Central application to activate your licenses and install them on your computer or on a USB flash drive.

## 2. HARDWARE

### DiGiGrid M Front Panel



- 1 Guitar Gain: +6 to +30dB
- 2 Guitar Input Meter
- 3 Hi Z Guitar Input 1M $\Omega$  impedance
- 4 MIX (Guitar Input Direct Listen): Routes mono feed of guitar input to monitor and headphone outputs, bypassing all other paths.
- 5 MIX (Mic Input Direct Listen): Routes mono feed of microphone input to monitor and headphone outputs, bypassing all other paths.
- 6 Headphone Output
- 7 Mic Input
- 8 Mic Gain: 0 to +70dB
- 9 Mic Input Meter
- 10 Phantom Power On/Off
- 11 Highpass Filter -3dB @ 100Hz, 18dB / octave
- 12 Output Level

### DiGiGrid M Rear



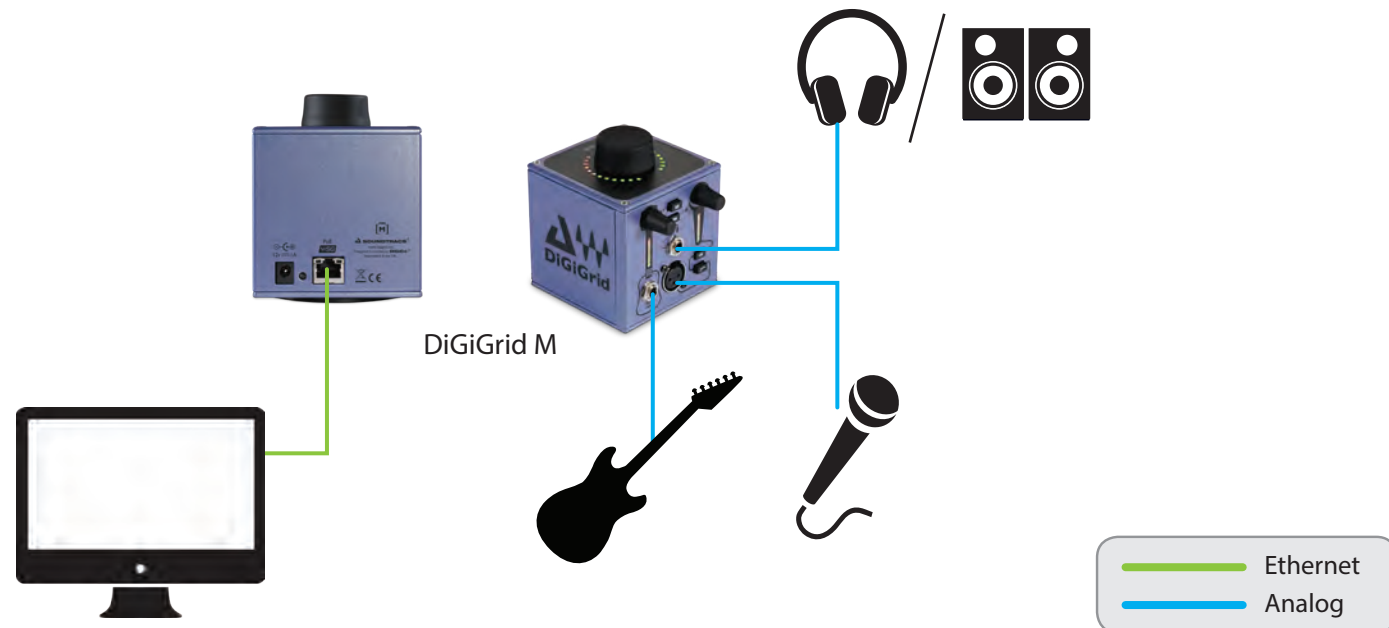
- 1 Reset
- 2 DC In
- 3 Soundgrid Network

### 3. SUGGESTED USES AND CONFIGURATIONS

There are many ways to use your DiGiGrid **M**. There are certain factors to consider when incorporating a DiGiGrid **M** into your studio: your existing (or future) equipment, how you work, and what you need to accomplish. Project studios with one or two DAWs can share I/O resources. Studios with several rooms and many DAWs can stream audio between rooms and quickly swap out devices. But no matter how simple or complex your setup is, connecting a DiGiGrid **M** involves only one cable: an Ethernet Cat 5e or Cat 6.

#### 3.1 One Computer with a DiGiGrid M

This is the most basic studio configuration. It includes a host computer with a native DAW and a single a DiGiGrid **M** that connects microphones, instruments, headphones, and monitors to the SoundGrid ASIO/Core Audio driver. This driver controls the network and all its devices.

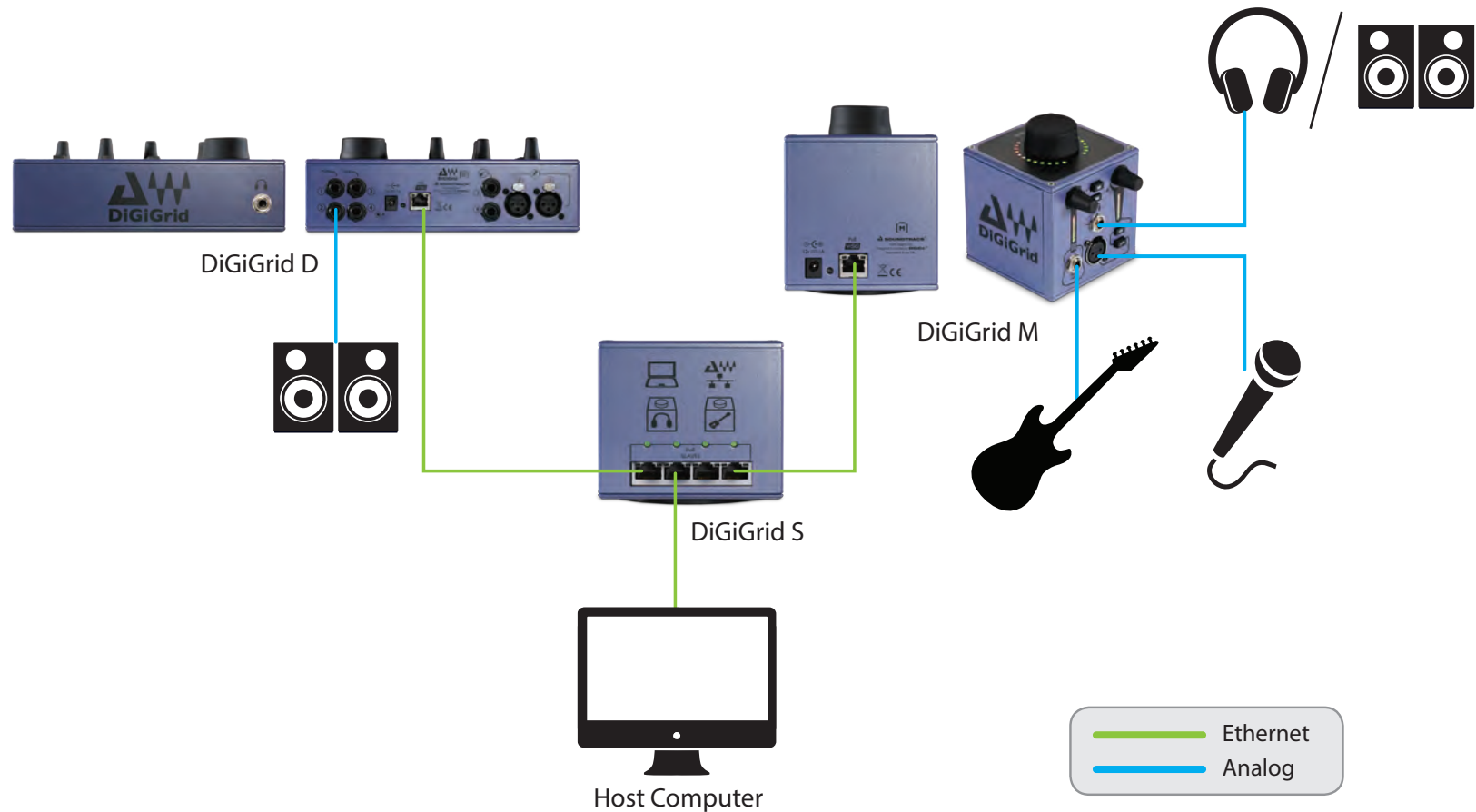




### 3.2 Adding More I/Os to Your System

Add a DiGiGrid **D** and you gain one more individual headphone output and four more inputs. Connect the DiGiGrid **D** and DiGiGrid **M** to the DiGiGrid S switch.

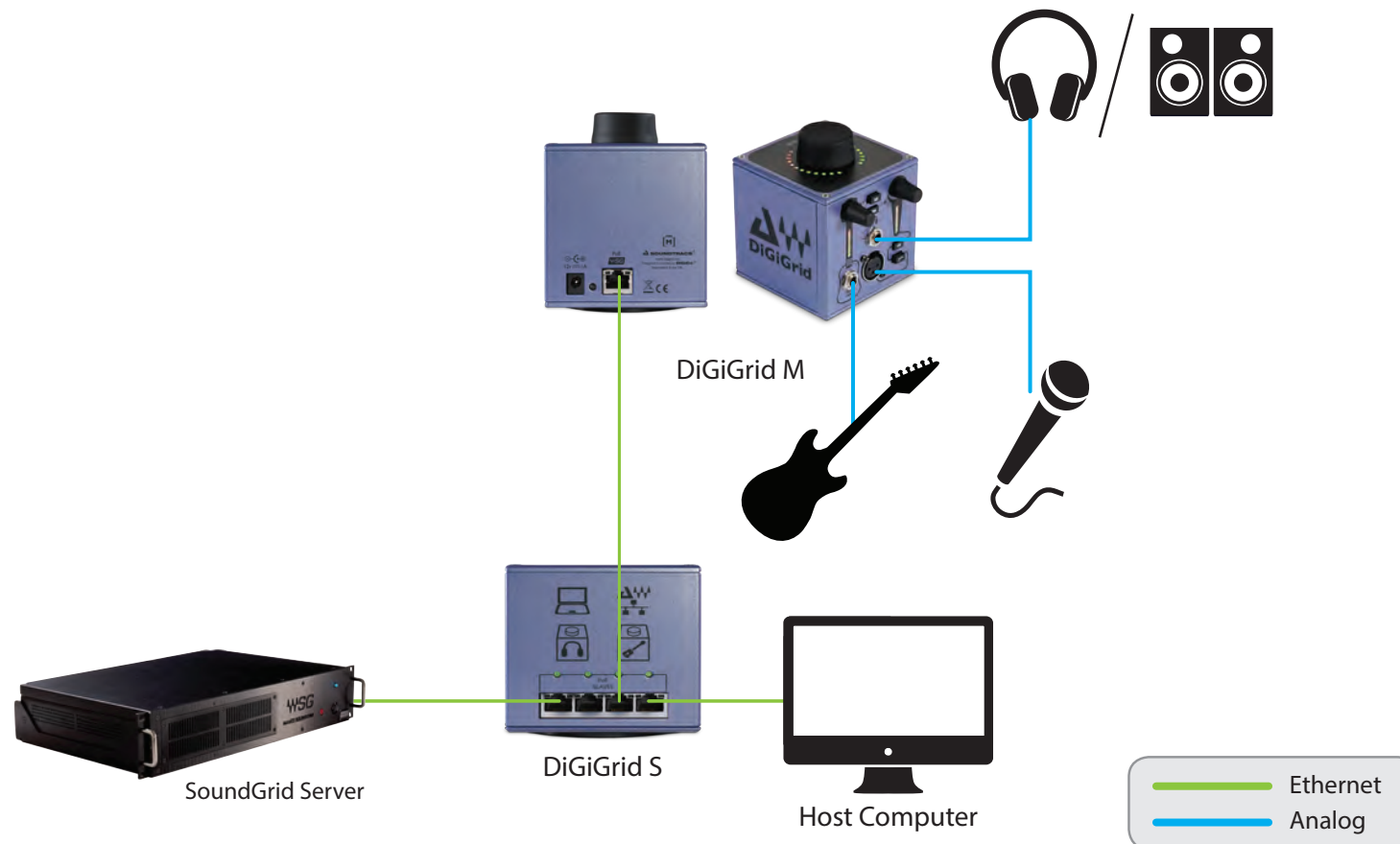
You can add up to eight SoundGrid I/O devices to a single host. Each of these can be accessed by any computer on the network. Audio and clock pass through the same Ethernet cable. This means of distributing clock is called "Sync over Ethernet" (SoE) and is used between all SoundGrid devices. If the DiGiGrid **M** is the SoE master, then the entire network will be locked to this external source.



### 3.3 Adding a Server

Adding a SoundGrid DSP server to a SoundGrid Studio system provides the processing power for the eMotion ST mixer and the StudioRack plugin. This enables low-latency recording and monitoring, and increases the number of plugins you can use simultaneously.

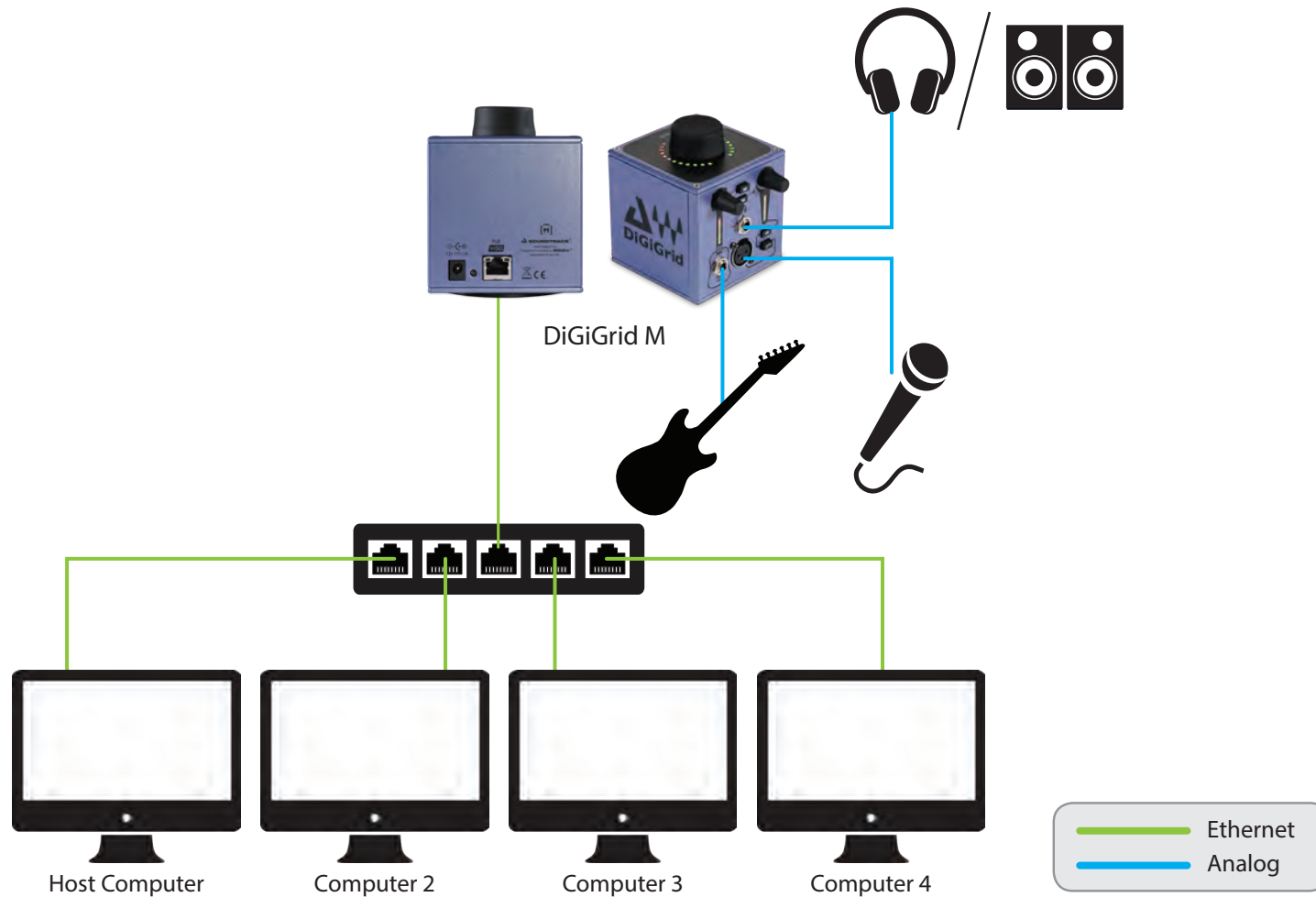
Some DiGiGrid and SoundGrid I/O devices are equipped with internal servers. Consider the server and I/O as separate devices in the Devices Racks of the System Inventory page. The server is assigned in the Servers section, and the I/O is assigned in the Rack A: Hardware I/O Devices section. All servers initially appear as "SGS." Once assigned, a server can be renamed.



### 3.4 Multiple Computers with a Single DiGiGrid M

If you want to stream audio between several computers in order to combine multiple mixes or elements, connect several DAWs to one DiGiGrid **M** interface. Each DAW can send and receive an audio stream, and any one computer can control the I/O. Any native DAW—or combination of different native DAWs—can be a part of this network, so each computer must have the DiGiGrid **M** software installed.

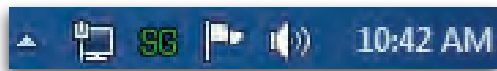
If you want to add more computers, you will need to connect them to the DiGiGrid **S** or to an approved external 1GB Ethernet switch.



# 4. SOFTWARE SETUP AND CONTROLS

A SoundGrid network is managed by the SoundGrid Studio Application. This application assigns and removes devices, oversees the network, patches between devices, and provides access to device control panels.

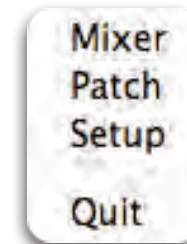
To maintain network effectiveness, the SoundGrid Studio Application always runs in the background. Bring SoundGrid Studio to the front by clicking on the SoundGrid icon in the Mac Top Bar or the Windows System Tray.



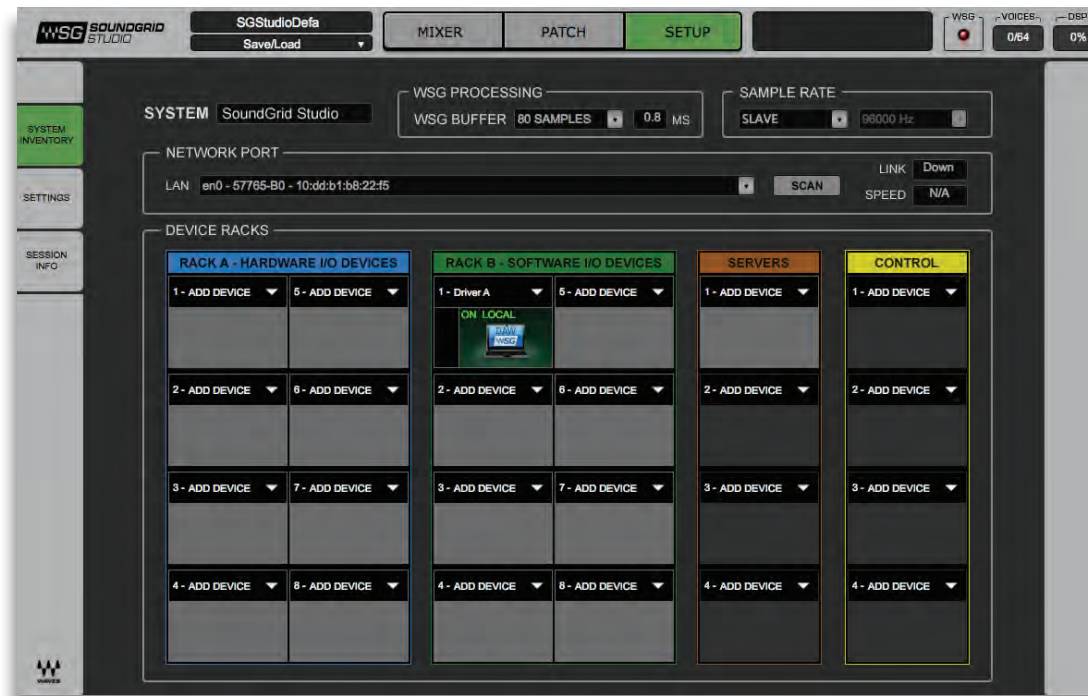
PC



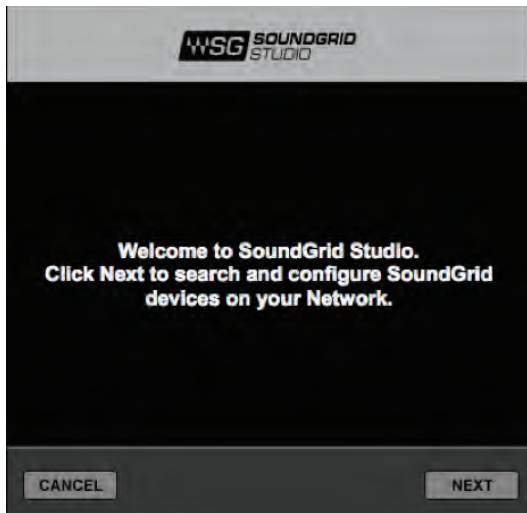
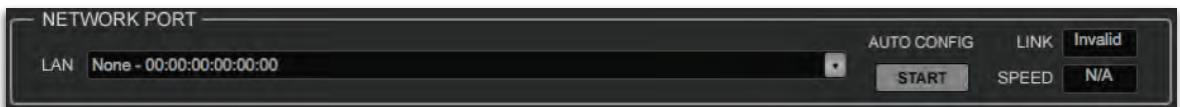
Mac



When SoundGrid Studio opens you will see the System Inventory page, part of the Setup section.



The first time you launch SoundGrid Studio, the Wizard will open. It scans the network, inventories its assets, and then configures the devices. If the Wizard does not start automatically, click the Start Auto Config button, which is next to the Network Port. Choose "NEXT" to start automatic configuration. This will take a few moments. Choose "CANCEL" to configure manually.



If the Wizard cannot locate the requested SoundGrid network devices, this means the devices might be turned off or not connected properly. When you resolve the problem, the Wizard will allow you to rescan the network or work as a Driver node slaved to another system. For more information please refer the SoundGrid Studio User Guide.

When configuration is complete, close the window. If there's still a problem, you can use the System Inventory page to assign devices, control the network, and manage clock. To learn how to use this page, please refer to the SoundGrid Studio Application user guide.

SoundGrid Studio uses Ethernet to stream audio between devices on a SoundGrid network. Clock synchronization is also carried over Ethernet. This method of providing clock is called Sync over Ethernet (SoE). SoundGrid I/O devices can clock by other means as well, but SoE is by far the most common (and convenient) way to provide clock information to network devices.

In the SoundGrid Studio Setup page, you will see racks containing all of the devices assigned to your system: physical and virtual I/O devices, drivers, and servers. Each I/O rack slot displays the device's mode, clock status, and sample rate.



In this example the DiGiGrid **M** is the SoundGrid network's clock master device, indicated by its blue color and the icon text: On, Master Clock, INT (48 kHz).

To add another SoundGrid device, click on the arrow in an empty rack slot. From the list of available devices, choose the one you want to add, in this case, a DiGiGrid IOS interface. In this image the DiGiGrid **M** is grayed out, and therefore unavailable, since it is already claimed (in this case, by you).



The new device is visible in the rack slot. Unless changed by the user, it remains a clock slave and is colored green. Use the same menu to change the clock master assignment from one device to another or to remove the device from the rack slot.

## 4.1 Device Firmware

Firmware is a small program that runs on a device in order to control it. It enables DiGiGrid **M** to communicate correctly with SoundGrid Studio. An I/O that is using outdated or incompatible firmware will not work properly in a SoundGrid network until its firmware is updated. To see if your DiGiGrid **M** firmware is compatible with the version of SoundGrid Studio that you are currently running, go the System Inventory page and locate the device. Next to each device slot is a button labeled FW, whose color indicates firmware status.



Grey	Compatible firmware
Blue	Compatible firmware, but a newer version exists
Red	Firmware not compatible and must be updated in order to use

Click on the FW button to launch the firmware Updater. This will initiate a scan of the hardware and then offer options. Do not disconnect the device or turn off the computer until you see "Done." After updating, turn the DiGiGrid **M** OFF and back ON to reset the device.

### 4.1.1 Resetting the Unit

If after an unsuccessful firmware update the DiGiGrid **M** is not recognized by MultiRack or SoundGrid Studio (the DiGiGrid **M** device does not appear in the Inventory panel), you can use the Reset button to try to recover the unit.

The Reset button is on the DiGiGrid **M** side panel.

- Turn off the unit.
- Press and hold the Reset button.
- Restart the unit while holding the button.
- Release the Reset button once the device has fully booted.

The unit is now in “force update” mode, and a new firmware update can be performed.

### 4.2 Identifying a Device from the SoundGrid Studio Device Rack

Just below the FW button is an ID button. Clicking on this button activates LEDs on the back panel of the hardware device.

This serves the same function as the Identify button on the Control Panel Top Bar.

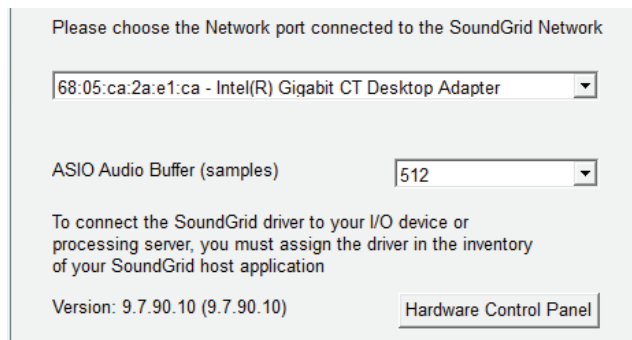
## 5. CONTROL PANEL

Access the DiGiGrid **M** Control Panel by clicking on the Gear symbol in the SoundGrid Studio Device Rack. From here you can control clock source, sample rate, clock type, and clock status.



Pressing the “Hardware Control Panel” button on the Driver Control Panel app will open the control panels of all I/O devices assigned to your SoundGrid application. If none are assigned, nothing will happen.

The Driver Control Panel app is located here:



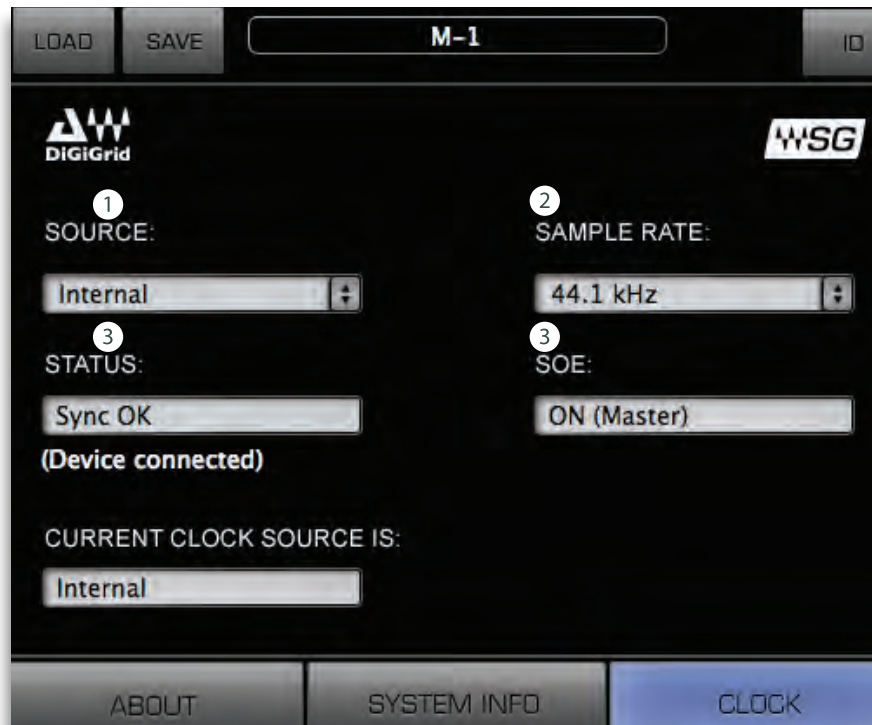
PC: C:\Program Files (x86)\Waves\SoundGrid\Driver Control Panel

Mac: System HD/Applications/Waves/SoundGrid



## 5.1 Clock Page

Use the Clock page to set the clock source and sample rate for the device and to assess clock status. Clock controls are on the left side of the page Status indicators are on the right.



**1 SOURCE** sets the clock source

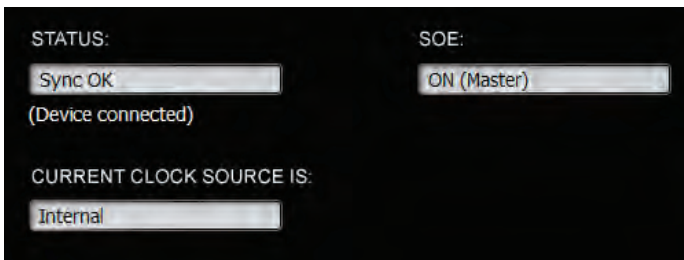
Sync over Internet	The DiGiGrid <b>M</b> sets its clock to the sample rate of the SoundGrid network. The device is a slave.
Internal	The device is the clock master and as such it determine the sample rate of the SOE network.

2 **SAMPLE RATE** sets the sample rate when Clock Source is set to Internal. Range: 44.1 / 48 / 88.2 / 96 kHz.



### 3 **CLOCK STATUS INDICATORS**

Three windows on the right side of the Clock control panel help you to quickly assess the network status of the DiGiGrid **M**.



<b>STATUS</b>	Reports the presence or absence of sync between the <b>M</b> and the SoundGrid network.
<b>CURRENT CLOCK SOURCE</b>	Displays the current sync method. This may differ from the choice made in the Source menu.
<b>SOE</b>	Indicates that the device is assigned to the SoundGrid network and whether it's the SOE master or a slave.

## 6. ADDING A SERVER

When you connect a server to the host computer and run the SoundGrid Studio Wizard, the server is assigned and configured for the host. Normally that's all you need to do. The server appears in the SoundGrid Studio Server rack, and the DiGiGrid **M** is seen in the Hardware I/O rack.



To assign, free, or rename a server, click on the arrow to reveal the list of available servers, select a server from the list, and remove or assign the server.



A server cannot be shared by multiple SoundGrid host applications such as SoundGrid Studio or MultiRack. Within a SoundGrid network, only one computer can utilize a server's processing power for StudioRack and the eMotion ST mixer. Once assigned to a computer, a server remains unavailable to all other computers until released by the user.

For further details, refer to the SoundGrid Studio Application manual.

## 6.1 Applications of an External Server

The external server gives you access to advanced features for mixing processing, and monitoring.

### 6.1.1 eMotion ST mixer

The eMotion ST is the mixer element of the SoundGrid Studio System. It lets you run SoundGrid plugins with low latency for monitoring while recording. The eMotion ST mixer enables you to create personalized monitor mixes, with plugin processing done pre-, post-, or in parallel with your DAW. eMotion ST combines 8 channel inputs with up to 64 StudioRack plugins. Each input or StudioRack channel can be sent to aux tracks or a main mix.



For further information, refer to the eMotion ST user guide.

## 6.1.2 StudioRack



StudioRack is a plugin chainer for any DAW. It hosts up to eight plugins, controls them, assigns them to external controllers, and manages them. All this in a way that makes it easy to move from one DAW session to another and from one DAW platform to another. It enables users to create racks of processors with limitless parameters and flexible signal flows, which are easily inserted into any track of the session.

When part of a SoundGrid network with a SoundGrid DSP server, StudioRack can shift plugin processing away from the local CPU and direct it to the SoundGrid DSP server. StudioRack works in conjunction with the eMotion ST mixer to create numerous personalized monitor mixes that use the same plugins heard in the mix—all with virtually no latency.

For more information, please refer to the StudioRack user manual.

## 7. MOVING AUDIO IN A SOUNDGRID NETWORK

You've configured the network and set up the DiGiGrid **M**. One last thing to do: Integrate your hosts into the SoundGrid network so that you can send audio to and from devices—and listen to it. In order to do this, the audio must be patched from one point to another.

SoundGrid is a scalable and very flexible network, so audio must be patched. You can connect any combination of items: a device channel, the eMotion ST mixer, another driver (that is, another computer), or a mix of these. Plus you can change your configuration at any time.

Usually you don't need to think about patching. When you first set up a SoundGrid network or change its physical inventory, the Wizard automatically sets up your devices and establishes the patches. Still, you should know how to patch between devices, drivers, and applications. Then you can take advantage of the flexibility of a SoundGrid network.

### **There are three types of SoundGrid Patch page connections:**

- Patch I/Os to drivers in order to connect with a DAW. The driver “speaks the same language” as the OS or DAW, so it serves as the intermediary between the I/O and the DAW.
- Patch directly to the eMotion ST. This application “speaks the same language” as the DiGiGrid **M**, so this connection bypasses the SoundGrid driver altogether.
- Patch two or more devices to each other to split signals to several hosts. This serves the purpose of a multi-connector or tie line.

## 7.1 Using an I/O Device with a DAW

When using a DAW on a SoundGrid network, the SoundGrid ASIO/Core Audio driver serves as a bridge between DiGiGrid M and the DAW.

It enables the I/O to communicate with the DAW, and it provides patch points for connections. Using the driver and routing audio through it involves two steps: patch between the I/O and the driver; then select the correct driver in your DAW as the playback engine.

### Selecting the Number Of Channels



When you configure your host application, you can allocate between Auto, 32, and 128 driver channels. This is done in Rack B of the Setup page. The number of channels you select here is reflected in the Patch page: fewer allocated channels means fewer channels visible.

Pick a number that only slightly exceeds the maximum total number of driver channels you will be using. There's no harm in selecting all 128 channels, but it may make the Patch page unwieldy.

Select Auto to match the number of driver channels to the maximum I/O count available on the assigned interfaces.

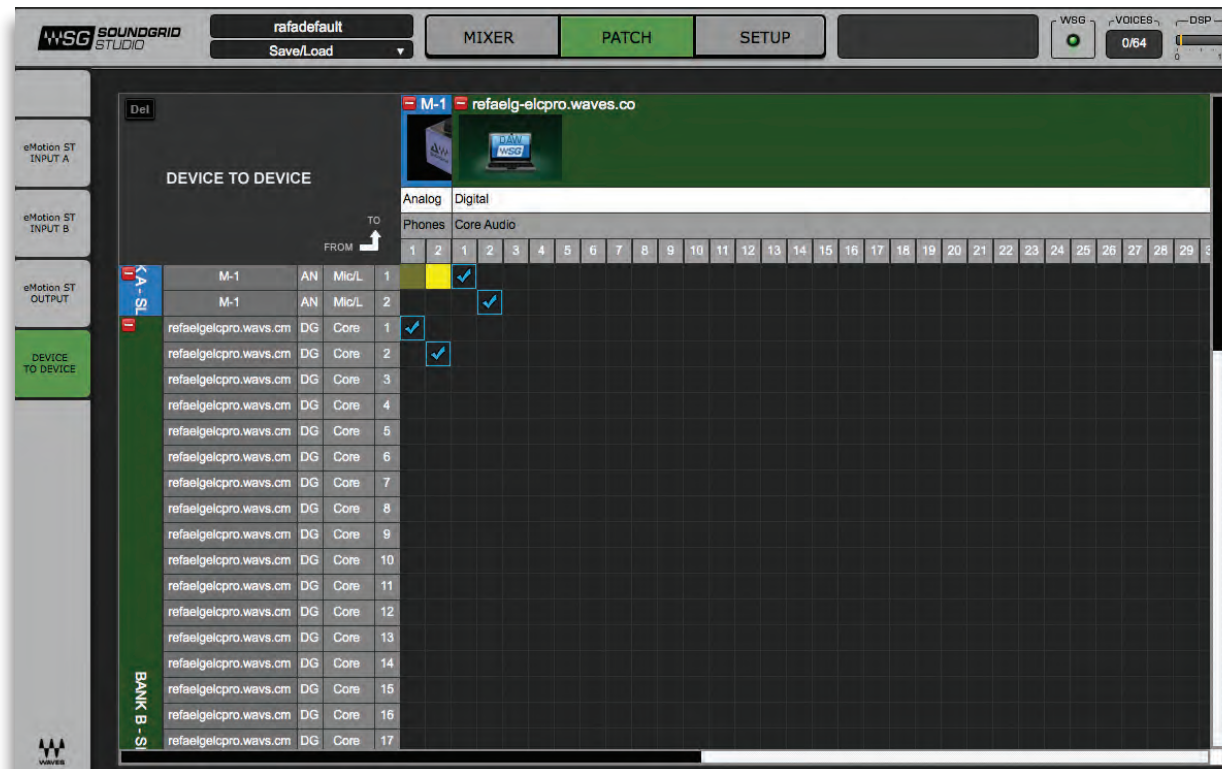
## 7.2 Patching I/O to Driver and Driver to I/O

When streaming audio to and from an DiGiGrid **M** and a DAW, you must assign DiGiGrid **M** inputs and outputs to the SoundGrid ASIO/Core Audio driver. (Alternatively, you may choose to monitor through the eMotion ST mixer. We'll cover that option later in this section.)

In the SoundGrid Studio Patch page, select the Device-to-Device tab. All device and driver channels are shown along both the horizontal and vertical axes. To make a standard "ascending patch" connection, draw the cursor in a diagonal line as shown below.

To create a customized patch, click on individual cells. There are many ways to patch devices, but normally DiGiGrid **M** inputs are patched to the ASIO/Core Audio inputs for recording. For playback, the patches are opposite, unless you choose to patch to the eMotion ST mixer for monitor mixing.

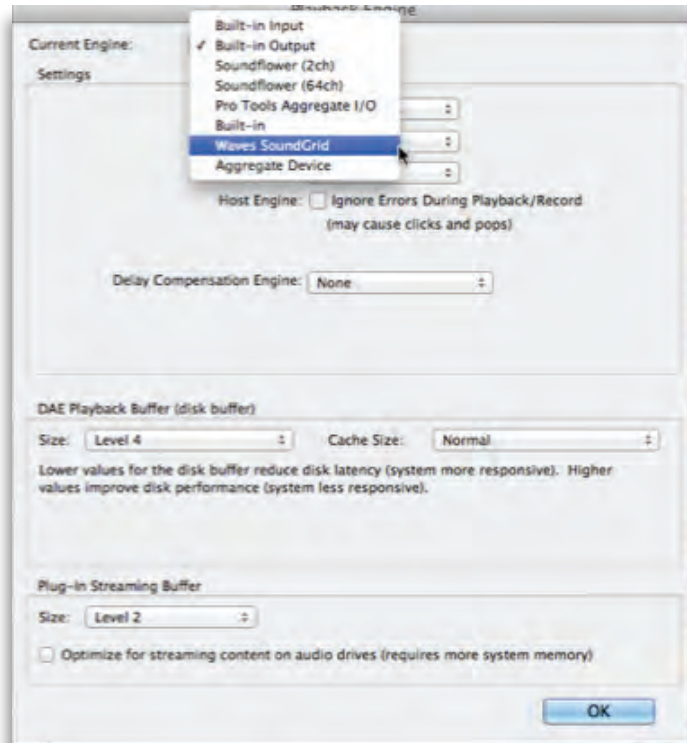
Once again, if you set up your system using the Wizard, you will not need to do any of this.





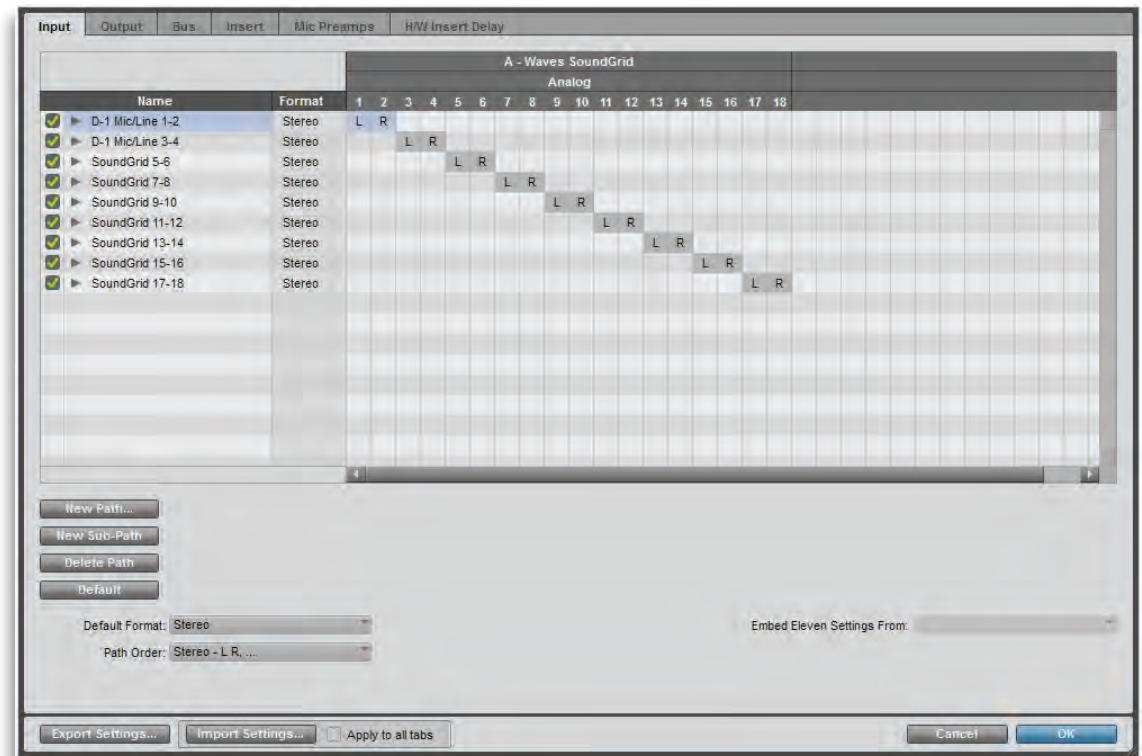
## Selecting the Driver in the DAW

When a DAW is part of a SoundGrid network, the SoundGrid ASIO/Core Audio driver must be its playback engine. Choose Waves **SoundGrid** from among your playback engine options.

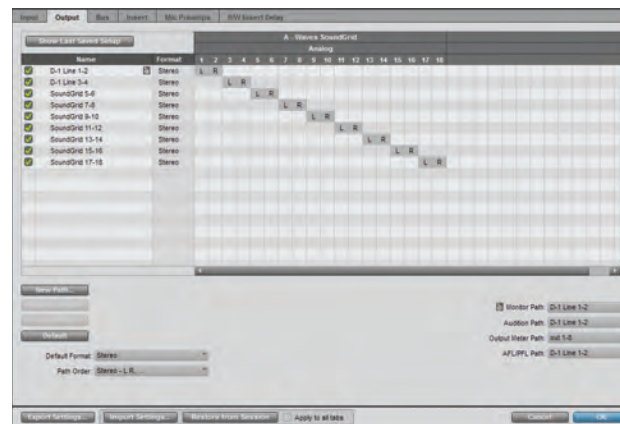
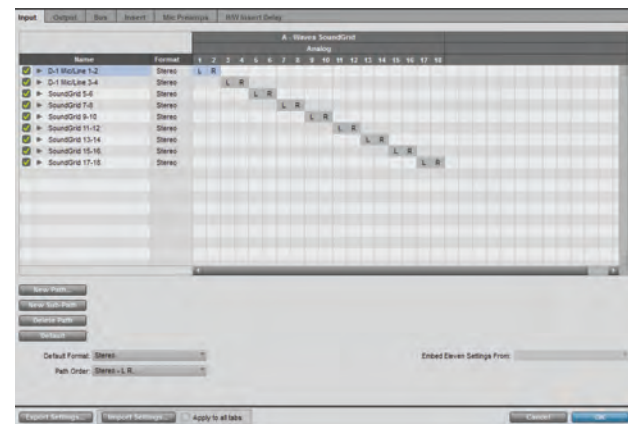
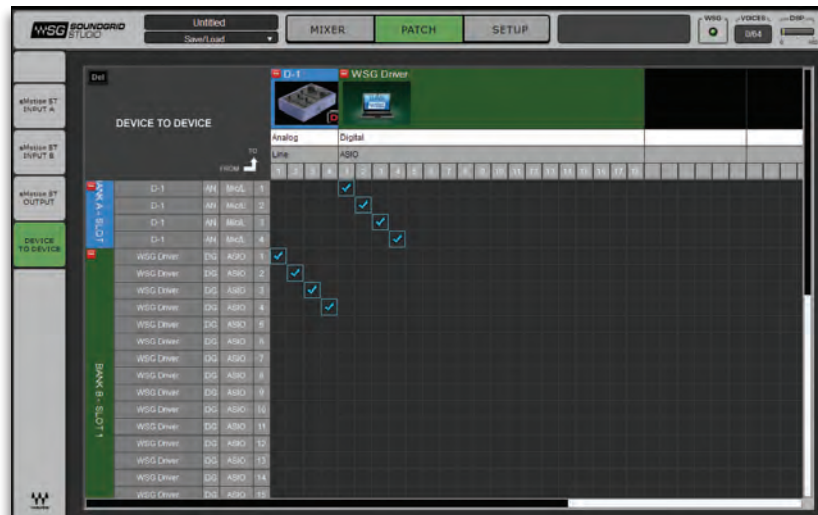


## DAW I/O Setup

When you look at the I/O setup page of your DAW, what you see are driver channels whose default names represent what they are connected to. What they are connected to is determined in the Patch page of the SoundGrid Studio application.



Note the relationship between the SoundGrid Studio Patch page and the DAW I/O Setup page.



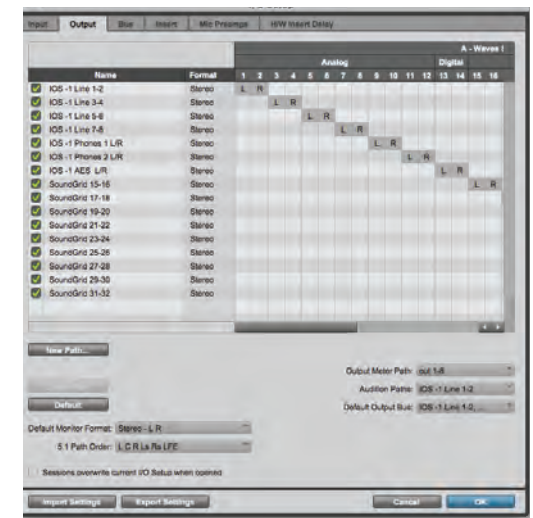
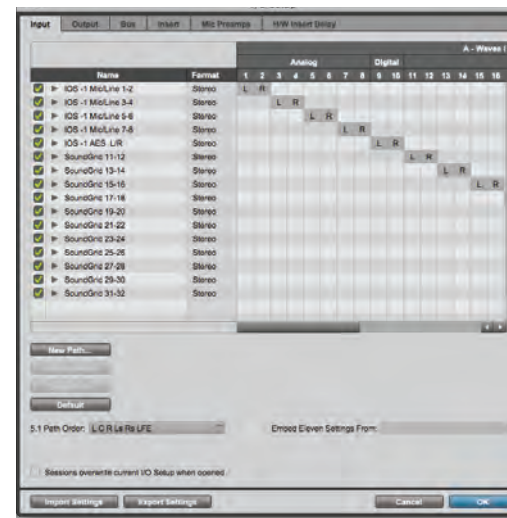
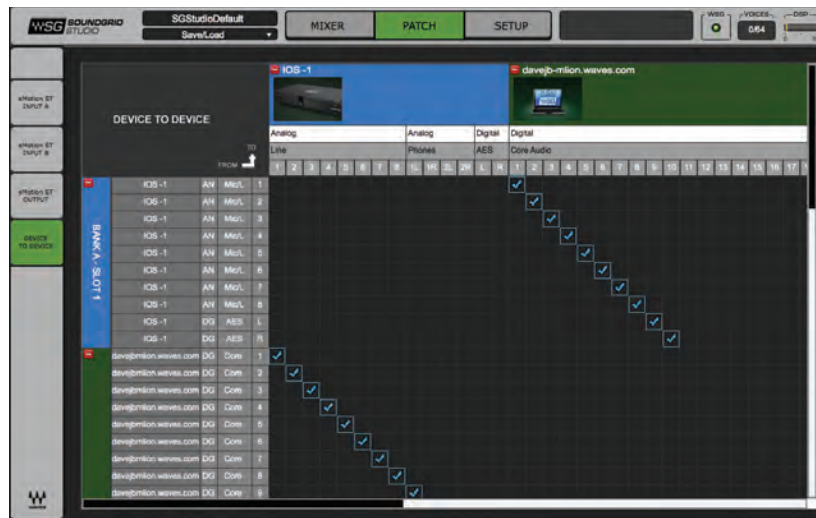
In the Patch page (left), DiGiGrid **M** analog channels 1–4 are patched to driver channels 1–4. The arrow on the upper left of the Patch indicates that signal flows from the DiGiGrid **M** to the driver. Now look at the DAW I/O. The 4 driver channels appear at the top, and are patched to DAW input channels 1-4.

## Driver Channel Names in your DAW

SoundGrid Studio patches from the Waves SoundGrid ASIO/Core Audio driver to a hardware I/O device, a secondary driver (another computer), or the eMotion ST mixer.

SoundGrid Studio transmits these names through the driver to the DAW. These will appear as the default names within your DAW.

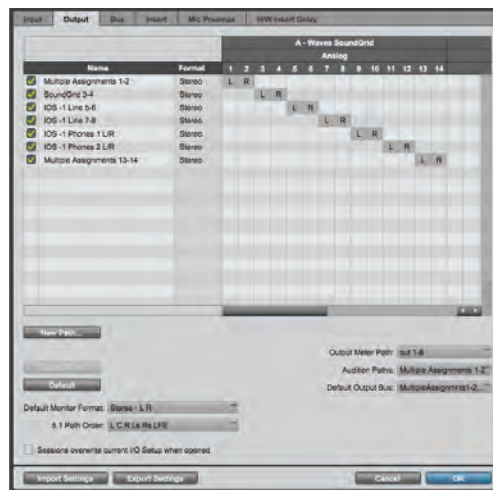
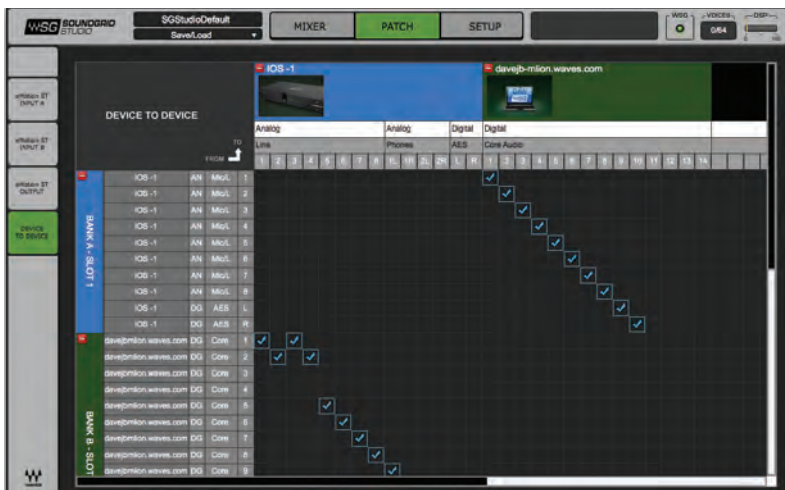
Most DAWs allow you to change the naming manually. For example, you may a DiGiGrid IOS with a total of 10 inputs (8 analog, 2 digital) and 14 outputs (8 analog, 2 digital, and 2 stereo headphone outputs). When these inputs and outputs are patched to and from the local driver (I/O to DAW, DAW to I/O), you will see the following in the Connection or IO setup within your DAW:



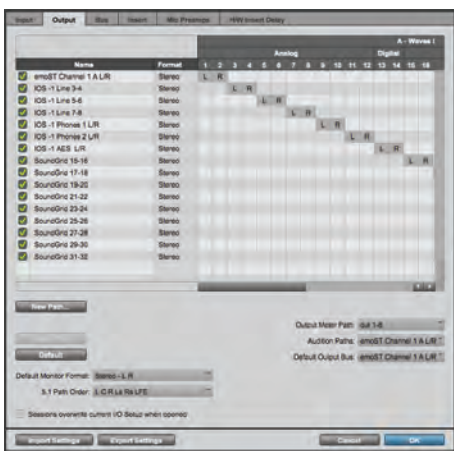
Local driver channels that are not patched to a hardware device or to the eMotion ST mixer will appear as SoundGrid 1, SoundGrid 2, etc.

**Note:** This transmission occurs while you launch your DAW and the driver handshakes with it. This means that any change of I/O name or eMotion ST channel name will not be visible in your DAW until you relaunch it. Some DAWs, such as Cubase, will let you reset the connection to the driver, saving you the need to relaunch the application.

**Important:** AW outputs through the driver can be patched to multiple destinations; for example, the DAW's Main out can go to your hardware channels 1 and 2 as well as to hardware channel 3 and 4. In such a case, the name of the driver channel will be "Multiple Assignments." In this case we suggest you manually name these driver channels.



As mentioned above, driver channels can be connected to the eMotion ST mixer or to a secondary remote driver. Here is an example of the DAW outputs patched to the eMotion ST mixer:



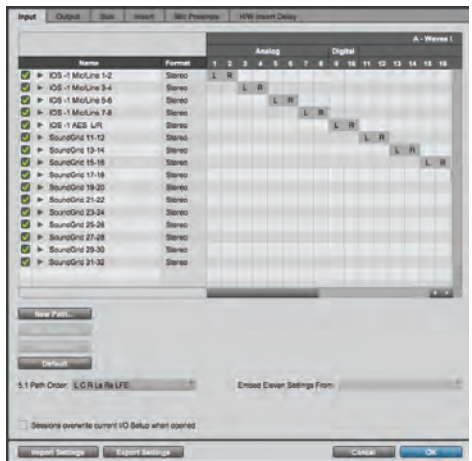
Here is an example of your DAW receiving input from another DAW on a secondary computer via networking:



To ensure that the names have been updated in your DAW, you may need to follow certain steps, depending on your DAW. Here are a few examples.

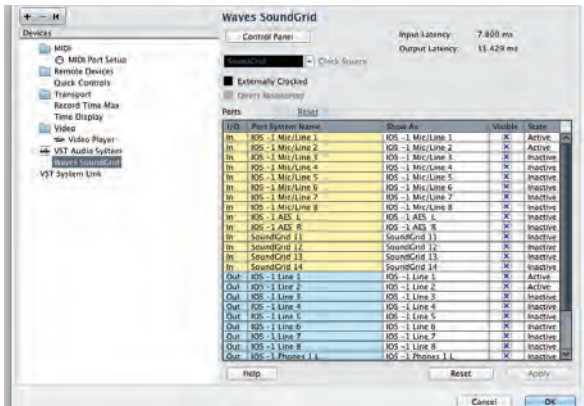
**Pro Tools**

Go to Setup > I/O  
Delete and reset all I/O configurations to DEFAULT.



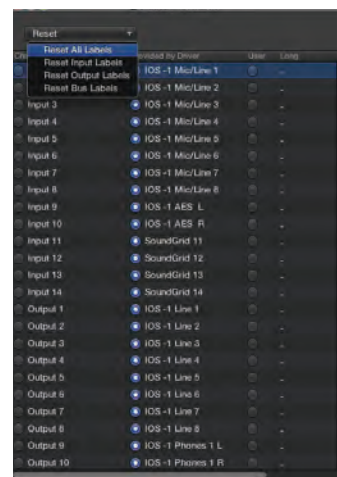
**Cubase**

Go to Devices > Device Setup > Waves SoundGrid.  
Select RESET above the PORT System Name table.



**Logic**

Go to Mix > I/O Labels.  
Select Reset All Labels.



## Multiple Client Core Audio/ ASIO Driver

The Waves SoundGrid ASIO (Windows) or Core Audio (Mac) driver lets you configure multiple hosts with the same local driver. This means you can use multiple DAWs on the same computer simultaneously. This allows you to record the same source to two DAWs on the same computer consecutively; route audio from multiple DAWs to a single I/O; and, if you have a SoundGrid server, route multiple DAWs to the eMotion ST mixer.

### **Please note the following when using this feature:**

1. All hosts must run the same sample rate. If sample rates do not match, each host will behave differently.
2. Driver inputs can be shared by multiple DAWs.
3. Driver outputs are exclusive on PC computers running Windows: if a certain driver channel output is used in DAW A, it cannot be used in DAW B. Driver outputs are not exclusive on Mac computers: the driver's operating system layer is able to mix these channels.

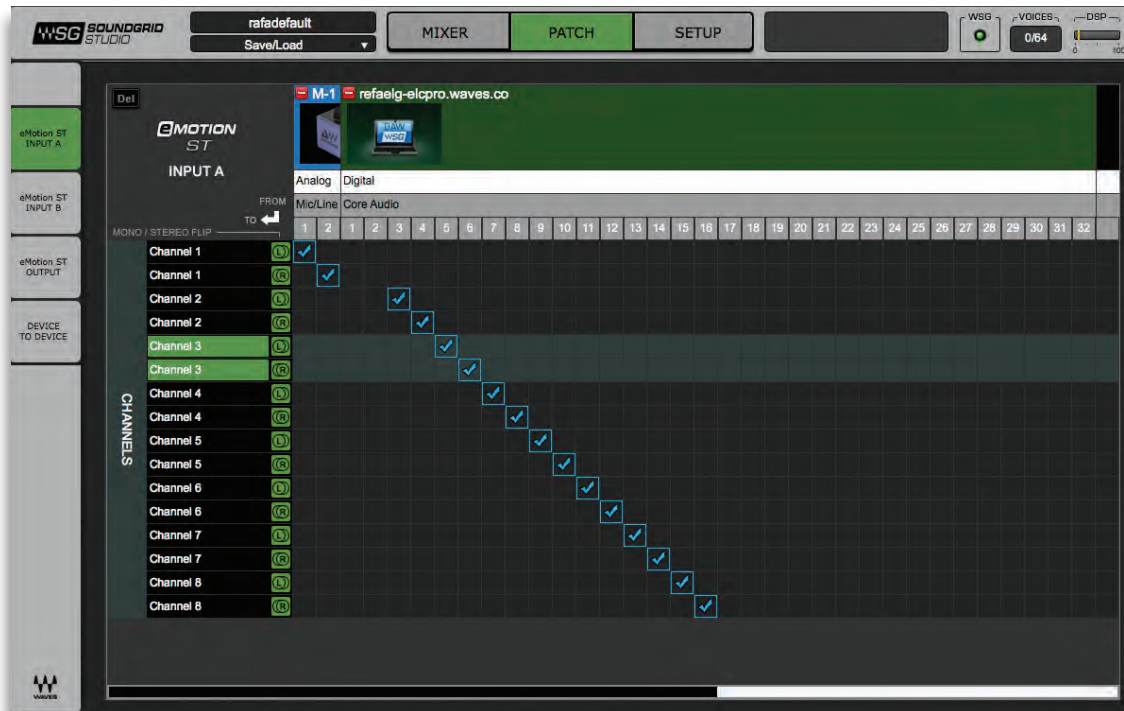
On PC computers running Windows, this limitation requires that you allocate driver channels manually between your DAWs. Choosing a driver output in a DAW will overwrite previous selections. For example, if you choose Main out in Cubase to be Driver Channel 1 and 2, you should choose the Main output in Ableton Live to be 3 and 4: if you choose 1 and 2 in Ableton Live, the Cubase output will be canceled.

**Please note:** Some hosts, for example Pro Tools and MultiRack Native, automatically claim all driver outputs. Even when using such hosts, however, you can use the same input driver channels to record to multiple DAWs.

4. It is not possible to connect local driver channels to one another. This means you cannot use SoundGrid Studio's device-to-device patch to virtually connect audio between two hosts on the same computer. To do this, you must route through the eMotion ST mixer (which requires a SoundGrid server).
5. You may use up to five hosts on a single computer/driver.

### 7.3 eMotion ST Mixer Patching

The eMotion ST mixer enables you to create studio monitor mixes as well as personalized headphone mixes. Patch to and from the mixer using the eMotion ST input and output tabs on the left side of the interface. The green buttons indicate whether a channel is mono, left side of a stereo pair, or right side of a stereo pair. Toggle between these states by double-clicking on the button.



To learn more about patching between devices or to and from the eMotion ST mixer, please refer to the SoundGrid Studio Application user guide.

A few things to remember about the Patch page:

- All available devices and driver channels will appear in the patch. The number of channels depends on devices and connections.
  - Patch direction is indicated by an arrow on the left side of the patch.
  - Establish a patch by clicking on a cell, or by dragging across several cells. Remove a patch by clicking on it again.
  - An output can patch to two inputs. An input can accept only one source.
- Use the tabs at left to choose among the patch options.

## 7.4 Device-to-Device Patching

Choose this view to patch devices and drivers to each other. All device and driver channels are shown along both the horizontal and vertical axes. There are many ways to patch devices, but normally DiGiGrid **M** inputs are patched to the ASIO/Core Audio inputs for recording. For playback the patches are opposite, unless you choose to patch to the eMotion ST mixer for monitor mixing. For further details, refer to the SoundGrid Studio Application user guide.

The screenshot shows the 'DEVICE TO DEVICE' patching interface. At the top, there are two device icons: M-1 and IOS-1. Below them is a grid for patching. The grid has columns for 'FROM' and 'TO'. The 'FROM' column lists devices and their channels. The 'TO' column lists various input types and channels. Two blue checkmarks are visible in the grid, indicating successful patching of IOS-1 to Mic/L 1 and Mic/L 2.

				Analog		Analog		Analog				Digital							
				Phones		Line						Phones		AES					
				1	2	1	2	3	4	5	6	7	8	1L	1R	2L	2R	L	R
K A - SL	M-1	AN	Mic/L	1															
	M-1	AN	Mic/L	2															
BANK A - SLOT 2	IOS-1	AN	Mic/L	1	✓														
	IOS-1	AN	Mic/L	2		✓													
	IOS-1	AN	Mic/L	3															
	IOS-1	AN	Mic/L	4															
	IOS-1	AN	Mic/L	5															
	IOS-1	AN	Mic/L	6															
	IOS-1	AN	Mic/L	7															
	IOS-1	AN	Mic/L	8															
	IOS-1	DG	AES	L															
	IOS-1	DG	AES	R															



## 8. TECHNICAL SPECIFICATIONS

### Mic Input

Input Impedance	1K5Ω
Gain Range	0 To +70dB
Frequency Response (Analogue To Analogue)	-3dB <10Hz To 100kHz
Harmonic Distortion	0.005% (40dB Gain)
Noise EINTypically	-127dB (70dB Gain)
High Pass Filter	-3dB 100Hz 18dB/Octave

### Line Input

Input Impedance	1MΩ
Gain Range	+6 To +30dB
Frequency Response (Analogue To Analogue)	-3dB <10Hz To 100kHz
Harmonic Distortion	0.005%
Noise / Min Gain	-82dBu Max Gain -73dBu

### Headphone

Gain Range	Infinity To +10dBMax
------------	----------------------

### Output Level

Load	Level RMS
16Ω	2.3V
32Ω	3.7V
100Ω	6.0V
200Ω	7.5V
600Ω	8.8V

**XLR connectors**

**Phase Termination Point**

Positive (+) Pin 2

Negative (-) Pin 3

Signal Ground Pin 1

Chassis Ground Case

**1/4" TRS connectors**

**Phase Termination Point**

Positive (+) Tip

Negative (-) Ring

Signal Ground Sleeve