

Yesterday

J. Lennon & P. McCartney

Slowly

© 1963 NORTHERN SONGS LIMITED, London, England
 All Rights for the United States of America, Mexico and the Philippines Controlled by MACLEN MUSIC, Inc. c/o ATV MUSIC CORP., Los Angeles, CA
 All Rights Reserved

F

Bass:F

Em

Bass:E

A7

Bass:A

Dm

Bass:D

B^b

Bass:B^b

C7

Bass:C

C

Bass:C

G7

Bass:G

Gm

Bass:G

Chanson D'Amour

Wayne Shanklin

Swing

© 1958 BIBO MUSIC PUBLISHERS, INC.

All Rights Reserved. Used by special permission of HIGH NOTE PUBLISHING CO., LTD., Tokyo, Japan via agreement with THE WELK MUSIC GROUP.



I Don't Want to Walk Without You

Jule Styne

Swing

Chords and markings in the score:

- Staff 1: Gm, C7, D7
- Staff 2: Gm, C7, Am, D7
- Staff 3: Gm, C7, G7, C7
- Staff 4: F, Cm7, D7
- Staff 5: 1. G7, C7, F, E7
- Staff 6: Am, E7, Am, Gm7, C7
- Staff 7: 2. G7, C7, F, Am, D7
- Staff 8: Gm, C7, G7, C7, F

© 1941 PARAMOUNT MUSIC CORP.
 All Rights Reserved. Used by special permission of NICHION, INC., Tokyo, Japan via agreement with FAMOUS MUSIC CORP.

Chord diagrams and bass notes:

- Gm**: Bass: G
- C7**: Bass: C
- D7**: Bass: D
- Am**: Bass: A
- G7**: Bass: G
- F**: Bass: F
- Cm7**: Bass: C
- E7**: Bass: E
- Gm7**: Bass: G

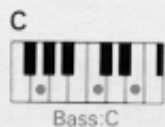
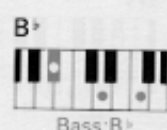
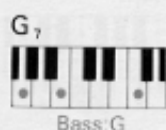
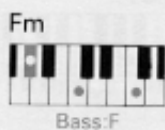
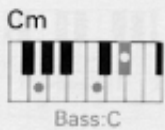
Theme From "God Father"

Nino Rota

$\text{♩} = 90$

Chord symbols: Cm, Fm, Cm, Fm, G7, Cm, B \flat , E \flat , D \flat , G7, Cm, Fm, Cm, Cm, Fm, G7, Cm, Fm, C

© 1972 FAMOUS MUSIC CORP.
All Rights Reserved. Used by special permission of NICHION, INC., Tokyo, Japan via agreement with FAMOUS MUSIC CORP.



Black Magic Woman

Peter Green

Medium

Musical score for "Black Magic Woman" in G minor, 3/4 time, medium tempo. The score consists of seven staves of music. The first six staves contain the main melody with various chords and ornaments. The seventh staff ends with a double bar line and the text "Your Adlib".

© Copyright 1968 by BOURNE MUSIC LTD.
All Rights Reserved Used by special permission of HIGH NOTE PUBLISHING CO., LTD., Tokyo, Japan, via agreement BOURNE MUSIC LTD.

Dm

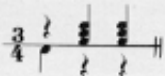
Bass:D

Gm

Bass:G

A₇

Bass:A



Nocturne

F. Chopin

Andante

Chords: E^b , $A^b \dim$ on E^b , E^b , E^b on D , $C7$

Chords: $B^b \dim$ on F , Fm , B^b7 , $G7$ on B , Cm , A dim, B^b sus4

Chords: B^b7 , E^b , E^b , $A^b \dim$ on E^b , E^b , E^b on D

Chords: $C7$, $B^b \dim$ on F , Fm , B^b , $G7$ on B , Cm

*A*dim B^b7sus4 B^b7 E^b B^b

Auto Arpeggio On

*F*onA A^b A^bm E^bonG E^b E^bdim

*C*7onE F7 Gm Cm F7 B^bonA B7onG[#] EonG C7onF7 B^b7

Upper Key Board

E^b B^bonE^b E^b E^bonD C7 B^bdim

Nocturne

Andante

F. Chopin

Chord progression: Fm, B^b, G7^{on}B, Cm, Adim, B^b7sus4, B^b7

Chord progression: 1. E^b, 2. E^b, A^bm^{on}E^b, E^b

Auto Arpeggio On

Chord progression: E^b, A^bonE^b, E^b, B^b7onE^b

Chord progression: E^b, F7onA, B^b7sus4, B^b7, E^b, A^bm

A^bm E^b A^bm E^b F₇onA

Musical notation for the first system, measures 1-6. Treble clef with triplets and slurs. Bass clef with chords and a rhythmic line.

B^b7sus4 G₇onB Cm F₇onA B^b7^(b9) B^b7

Musical notation for the second system, measures 7-12. Treble clef with chords and slurs. Bass clef with chords and a rhythmic line.

Rubato
8va *tacet*

Musical notation for the third system, measures 13-15. Treble clef with rapid sixteenth-note runs. Bass clef is silent.

E^b

Musical notation for the fourth system, measures 16-21. Treble clef with slurs and a final flourish. Bass clef with chords and a rhythmic line.

Specifications/Technische Daten Caractéristiques Techniques/Especificaciones

B-205

KEYBOARDS

Upper: 44 keys f ~ C₄ (3-2/3 octaves)

Lower: 44 keys F ~ C₃ (3-2/3 octaves)

Pedals: 13 keys C₁ ~ C (1 octave)

TONE LEVERS

Upper: Flute 16', Flute 8', Flute 4', Trombone 16', Clarinet 16',

Oboe 8', String 8', Combination

Lower: Flute 8', Horn 8' or Piano, Cello 8' or Guitar

Pedals: Bass 16', Bass 8'

UPPER SPECIAL PRESETS

Piano, Harpsichord, Guitar, Vibraphone

EFFECT LEVERS

Vibrato Delay (upper), Vibrato Depth

EFFECT CONTROLS

Upper Sustain, Pedal Sustain

EFFECT TABLET

Upper 16' 8' 4' Sustain

AUTO RHYTHM SECTION

Rhythm Selectors

March, Waltz, Swing, Slow Rock, Jazz Rock, Disco, Tango,
Bossanova, Rhumba, Mambo, Samba, 16 Beat

Rhythm Controls

Rhythm Start, Rhythm Synchro Start, Tempo Control,
Volume Control, Tempo Light, Foot Switch (Rhythm Stop),
Rhythm Variation (On, 4 Bar/8 Bar)

AUTO BASS/CHORD SECTION

Normal, Single Finger Chord, Fingered Chord, Custom ABC,
Constant, Memory

AUTO ARPEGGIO SECTION

Pattern Selectors

Up, Turn, Variation 1, Variation 2

Arpeggio Controls

Arpeggio Voices 1, 2,
Sustain Control, Volume Control

MAIN CONTROLS

Manual Balance, Master Volume, Expression Pedal, Power Switch,
Power Light

OTHER FITTING

Headphones Jack (390 Ω Imp.)

AUX OUT Jack (470 Ω Imp.)

AUX IN Jack (23 k Ω Imp.)

EXP. IN Jack (47 k Ω Imp.)

Music Rest, Matching Bench

MAIN AMP

30 w x 1 (8 Ω Imp.)

SPEAKERS

Woofer 30 cm (12") x 1

Tweeter 5 cm (2") x 1

CIRCUITRY

Solid State (incl. LSIs and CIs)

Output Power: 30 w (RMS)

Power Consumption: See Electone nameplate

Power Source: 50/60 Hz AC

DIMENSIONS

Width: 112.8 cm (44-1/2")

Depth: 52.5 cm (20-1/2")

Height: 90.4 cm (35-1/2")

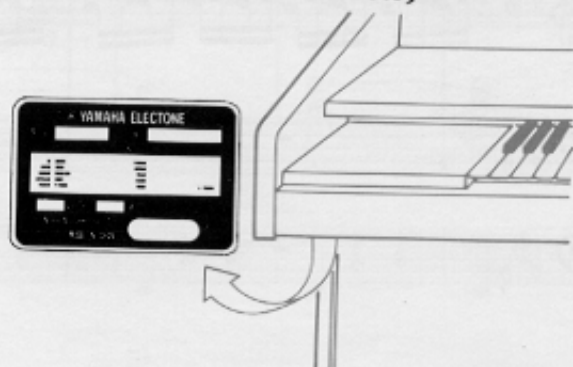
WEIGHT

50 kg (110 lbs.)

FINISH

American Walnut Grain (Polyester Finish)

(Where to find the Name plate)
(Hire ist das Typenschild angebracht)
(Emplacement de la plaque signalétique)
(Dónde localizar el membrete)



B-405

KEYBOARDS

Upper: 44 keys f~C₄ (3-2/3 octaves)

Lower: 44 keys F~C₃ (3-2/3 octaves)

Pedals: 13 keys C₁~C (1 octave)

TONE LEVERS

Upper: Attack 4', Flute 16', Flute 8', Flute 4', Trombone 16',

Clarinet 16', Oboe 8', String 8', Combination 1, Combination 2

Lower: Flute 8', Horn 8' or Piano, Cello 8' or Guitar

Pedals: Bass 16', Bass 8'

SPECIAL PRESETS-CUSTOM VOICES

Special Presets

Cancel, Piano, Harpsichord, Guitar, Vibraphone

Custom Voices

Cancel, Flute, Saxophone, Trombone, Trumpet

Controls

Upper Ensemble, Special Presets Volume, Custom Voices

Volume

EFFECT LEVERS

Attack Length (upper)

Vibrato Delay (upper), Vibrato Depth

EFFECT CONTROLS

Upper Sustain, Pedal Sustain

EFFECT TABLET

Upper 16' 8' 4' Sustain

TREMOLO/SYMPHONIC CHORUS

Upper Flute, Upper & Lower Orchestra, Lower Flute,

Tremolo Speed Slow/Fast, Tremolo/Symphonic Chorus

AUTO RHYTHM SECTION

Rhythm Selectors

March, Waltz, Swing, Slow Rock, Jazz Rock, Disco, Tango,

Bossanova, Rhumba, Mambo, Samba, 16 Beat

Rhythm Controls

Rhythm Start, Rhythm Synchro Start, Tempo Control,

Volume Control, Tempo Light, Foot Switch (Rhythm Stop),

Rhythm Variation (On, 4 Bar/8 Bar)

AUTO BASS/CHORD SECTION

Normal, Single Finger Chord, Fingered Chord, Custom ABC,

Constant, Memory

AUTO ARPEGGIO SECTION

Pattern Selectors

Up, Turn, Variation 1, Variation 2

Arpeggio Controls

Arpeggio Voices 1, 2,

Sustain Control, Volume Control

MELODY ON CHORD

Cancel, Mode 1, Mode 2, Vol. Soft

MAIN CONTROLS

Manual Balance, Master Volume, Expression Pedal, Power Switch, Power Light

OTHER FITTING

Headphones Jack (390 Ω Imp.)

AUX OUT Jack (470 Ω Imp.)

AUX IN Jack (23 kΩ Imp.)

EXP. IN Jack (47 kΩ Imp.)

Music Rest, Matching Bench

MAIN AMP

30 w x 1 (8 Ω Imp.)

SPEAKERS

Woofers 30 cm (12") x 1

Tweeter 5 cm (2") x 1

CIRCUITRY

Solid State (incl. LSIs and ICs)

Output Power: 30 w (RMS)

Power Consumption: See Electone nameplate

Power Source: 50/60 Hz AC

DIMENSIONS

Width: 112.8 cm (44-1/2")

Depth: 52.5 cm (20-1/2")

Height: 90.4 cm (35-1/2")

WEIGHT

50 kg (110 lbs.)

FINISH

American Walnut Grain (Polyester Finish)

Specifications subject to change without notice.

Special Instructions for British-Standard Model

As the colours of the wires in the mains lead of this apparatus may not correspond with the coloured markings identifying the terminals in your plug proceed as follows.

The wire which is coloured BLUE must be connected to the terminal which is marked with the letter N or coloured BLACK.

The wire which is coloured BROWN must be connected to the terminal which is marked with the letter L or coloured RED.

IMPORTANT

THE WIRES IN THIS MAINS LEAD ARE COLOURED IN ACCORDANCE WITH THE FOLLOWING CODE

BLUE: NEUTRAL

BROWN: LIVE

SINCE 1887



YAMAHA

NIPPON GAKKI CO., LTD. HAMAMATSU, JAPAN
ELECTONE is a registered trademark of Nippon Gakki Co., Ltd.